

Plan2Fund: A Tool to Organize Your Watershed Funding



*Bill Jarocki
Environmental Finance Center
Boise State University*

*Amy Williams
Environmental Finance Center
Boise State University*

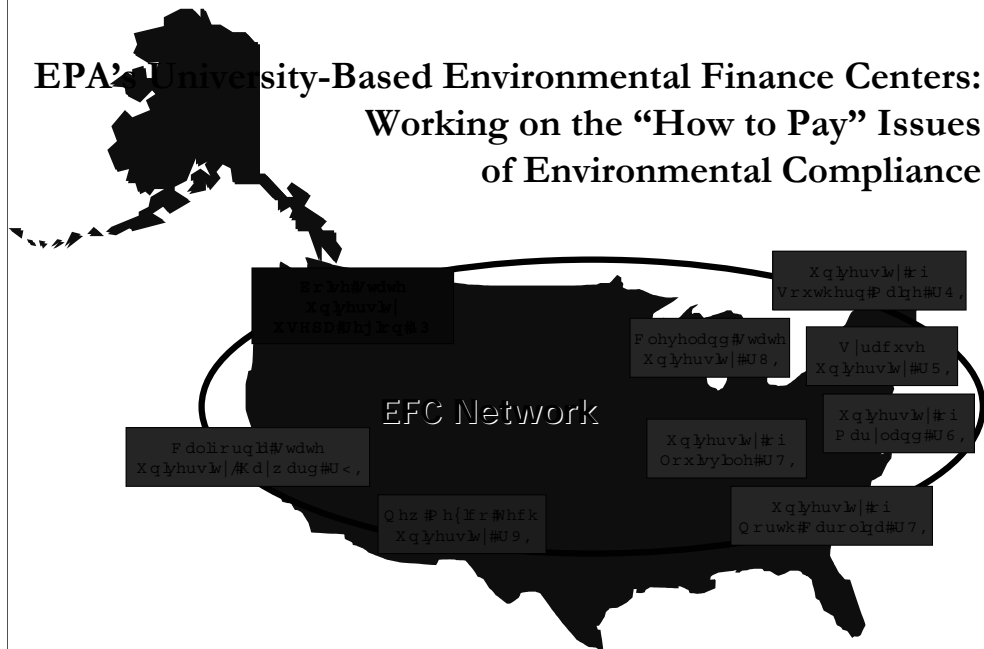
*Lee Napier
Grays Harbor County
Chehalis Basin Partnership*

Environmental Finance Center at Boise State University

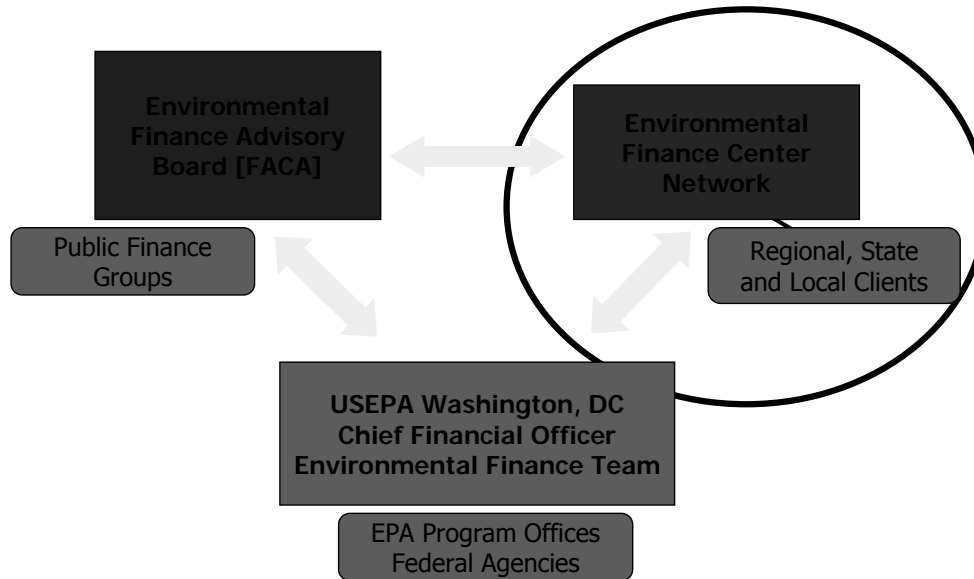


Environmental Finance Center
Boise State University

EPA's University-Based Environmental Finance Centers: Working on the "How to Pay" Issues of Environmental Compliance



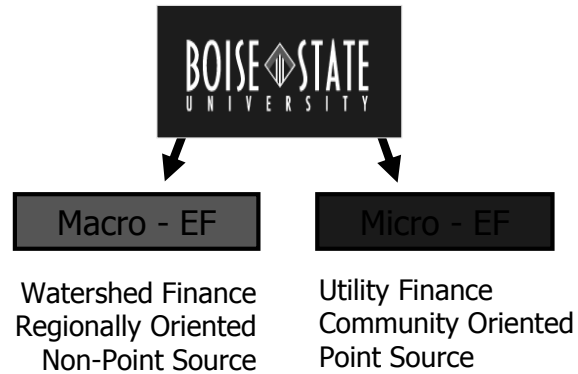
EPA Environmental Finance Partners



Mission:

- The mission of the Environmental Finance Center at Boise State is to provide help to those facing the *"how to pay"* challenges of environmental protection.
- EFC-10 is committed to helping communities build and improve the technical, managerial, and financial capabilities needed to comply with federal and state environmental protection laws.

Macro and Micro Environmental Finance



Micro – Environmental Finance Programs

- ⌘ Utility Rate Setting Training and Technical Assistance
 - ⌘ RateCheckup™
- ⌘ Infrastructure Financing Assistance
 - Alternative Financing Methods
 - *Guidebook of Financing Tools*
- ⌘ Management and Financial Capacity Tools
 - Idaho DW Handbook for Board Members*
 - Kansas, Washington budgeting tools*
- ⌘ Utility Asset Inventory and Replacement Financing
 - CAPFinance™
- ⌘ CWSRF/DWSRF Financial and Management Capacity Reviews (Idaho, Alaska and *Washington in 2004*)
- ⌘ Brownfields Project Assistance
- ⌘ SDWA Implementation: TFM Strategies and Tools

Macro – Environmental Finance Programs

Watershed Financing Workshops

DIRECTORY OF WATERSHED RESOURCES (Web-Based)

Watershed Funding Interactive Database - included Region 10
and Region 1 Region data and Replicated for Region 4 by
University of North Carolina

Strategic Planning for Watershed Improvements
Plan2Fund™

Lower Boise River Pollution Trading Project

Watershed Financing Assistance
Alternative Financing Methods

Guidebook of Financing Tools

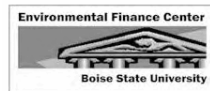
Prioritization Tool – Chehalis Model

Brownfields Project Assistance

Community Charrettes: Jerome, ID; Pocatello, ID; Newberg, OR;
Siletz Tribe, OR; Chiloquin, OR

Agency Charrettes: Lower Boise Watershed Stakeholders,
EPA Region10

Building Financial & Management Capacity Through Research, Training and Assistance



home || environmental finance center

Welcome to the Environmental Finance Center at Boise State University. To find out more about us, please click links below or to the left to navigate through our site.

home
who we are
news
services & tools
recent presentations
publications
partner sites



who we are



news



tools & services



<http://sspa.boisestate.edu/efc>



This is what we've learned...

In pure public finance terms, watershed funding is one of the most difficult funding challenges.

This is because cost, organizational, intergovernmental and time factors are more complex in watershed restoration than in any other environmental finance setting.

If this is so...

Recognize that there never has been, nor will there ever be, enough public funding available to get the job done.

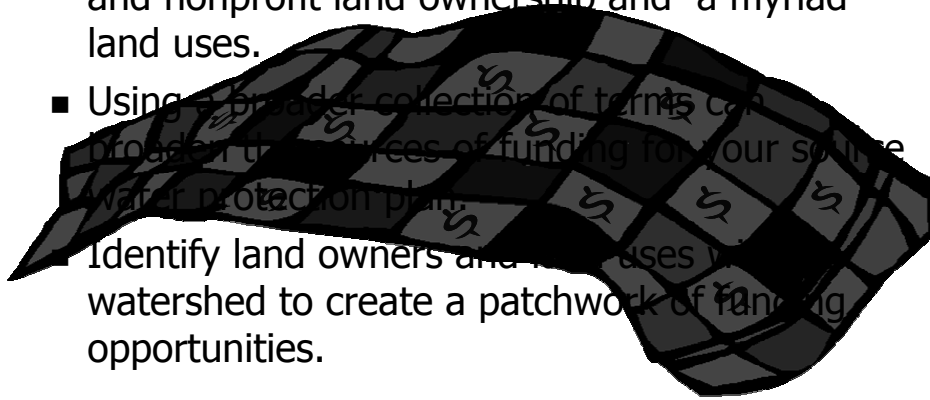
Utilize the existing watershed framework to create a funding strategy that uses the skills and strengths of stakeholders, in coordination with multiple funding sources, to realize implementation of plans and reach objectives.

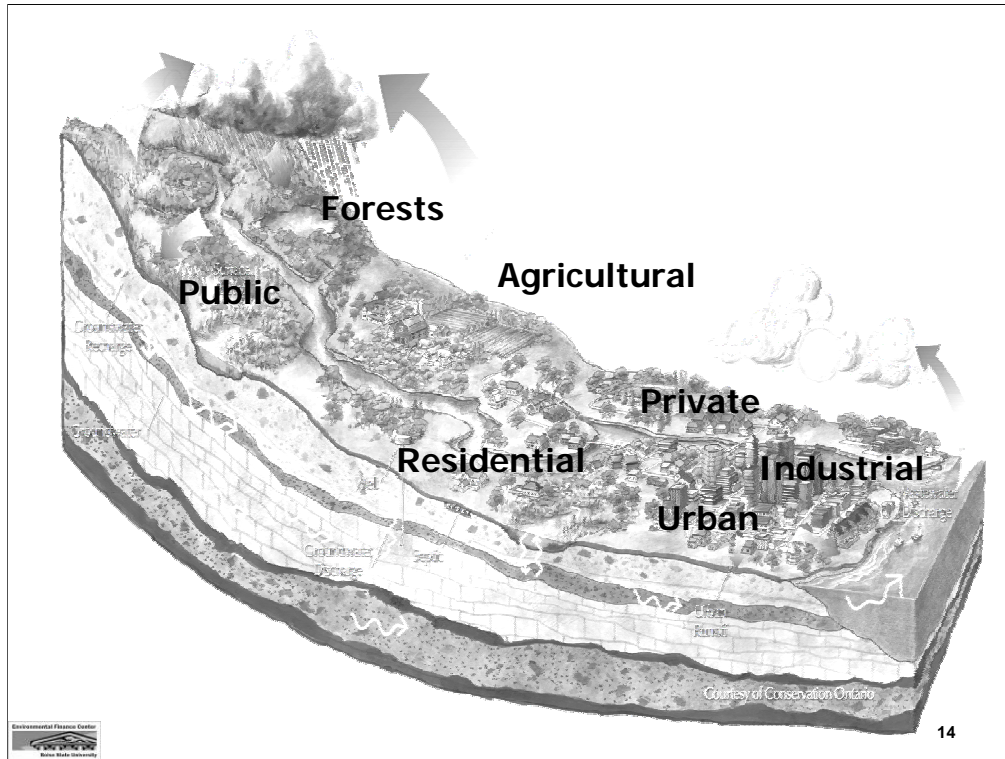
Financing Watershed Restoration with a “Community Quilt”

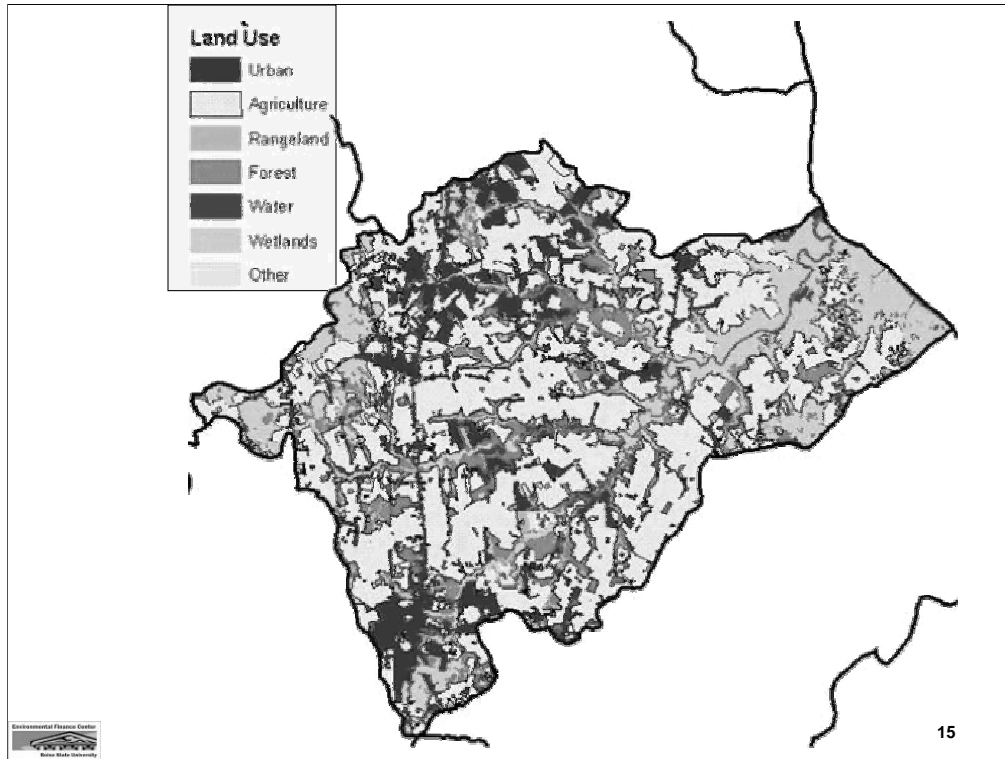


“Community Quilt” concept of financing

- The Watershed is a Mosaic of public, private and nonprofit land ownership and a myriad land uses.
- Using a broader collection of terms can broaden the sources of funding for your source water protection plan.
- Identify land owners and land uses within watershed to create a patchwork of funding opportunities.







Creating the Quilt

- Federal, State and Local programs *plus*
- Financing techniques such as innovative rate structures
- Public-private partnerships
- Storm water utilities



Each land use and activity has different funding options.



Forest Stewardship Program
Forest Legacy Program
American Forest Foundations



Community Development Block Grants
Greenspaces Program
Alaska Conservation Foundation
Sustainable community grants



EQUIP
Alaska Commercial Fishing and Agriculture Bank
319 Non Point Source Grants

A Holistic approach...

Broad-based sources of funding leads to broad-based support for objectives

Think creatively about issues related to finance.

Create a visionary strategy/financing plan that relies on diverse sources of funding.



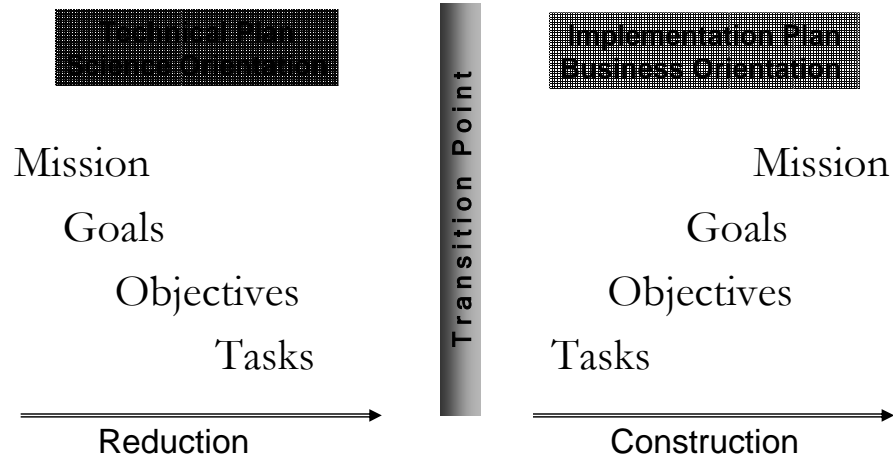
Questions



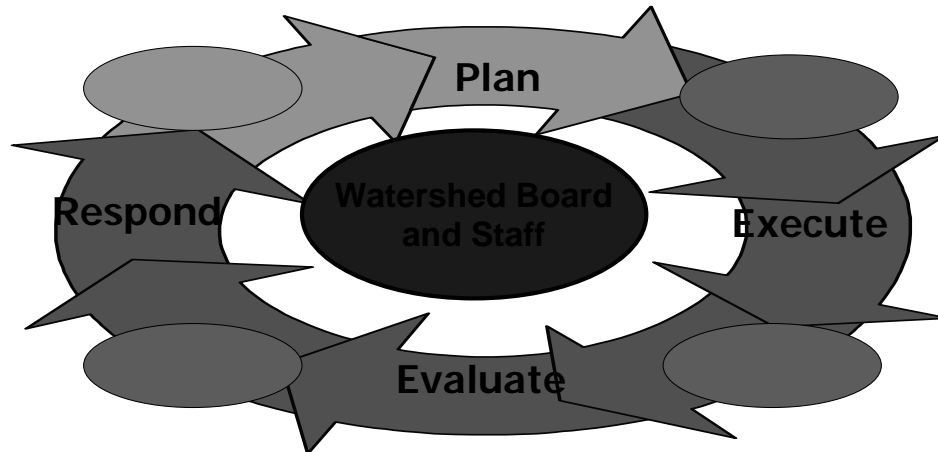
What are the tools for developing a strategic funding strategy?

- Plan2Fund
- Prioritization Tool
- Funding Sources and Financing Techniques
 - Guidebook of Financial Tools
 - Directory of Watershed Resources, Catalog of Federal Funding for Watershed Protection and other databases

Planning to Implementation Transition



Using the Business Cycle Model to Turn the Watershed Plan into Reality

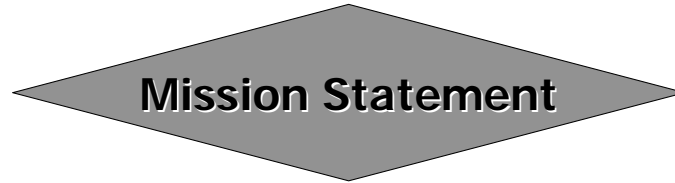


- Planning: Where do we want to go?
 How do we compare to peers?
 What is the impact of these decisions?
- Budget: What do we have to do?
 Can we achieve the targets?
 How do we allocate resources?
- Report: Where are we?
 How are we doing compared to the plan?
 What actually happened?
- Analysis: What decisions do we make?
 What are the alternatives?
 Why did it happen?

Turning the Plan into a Budget

- The planning process identifies goals, objectives and tasks for the next year and future years
- Priorities are then established
- Each task requires resources
- The budget is the roadmap for how resources will be acquired and used

Watershed Planning: Using the Classical Planning Process

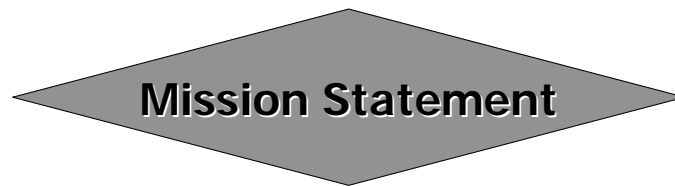


Goal

Goal

Goal

As we move from Mission to Goals - and then to Objectives - more specific information is revealed that is essential for implementation...



Goal

Goal

Goal

Objective

Objective

Objective

Objective

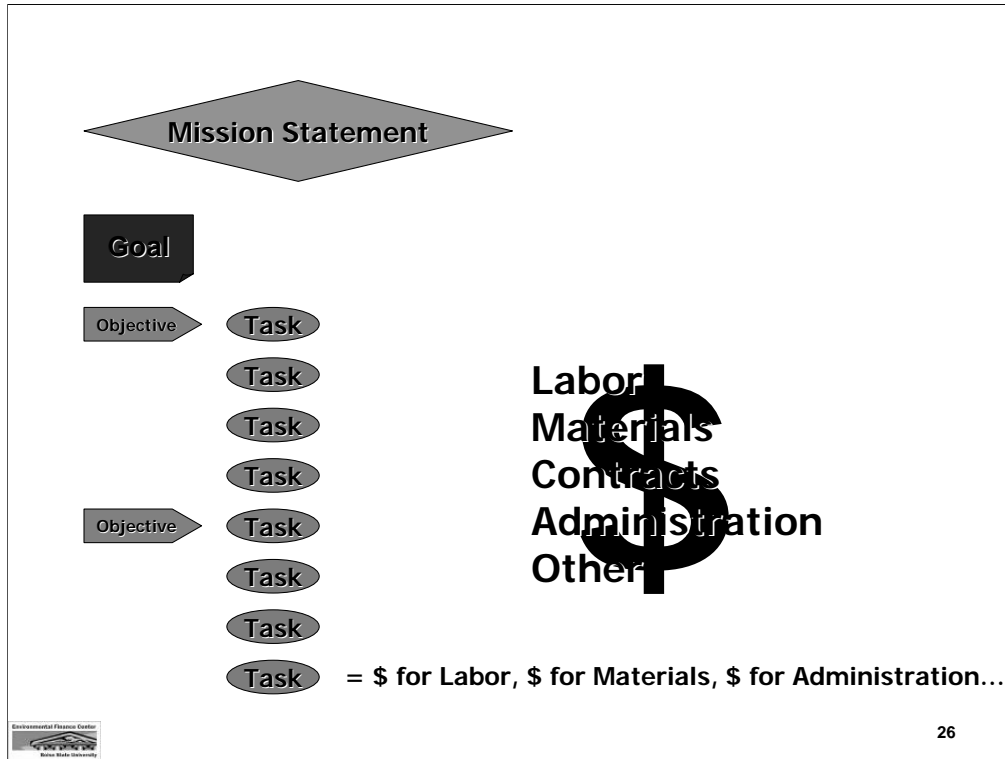
Objective

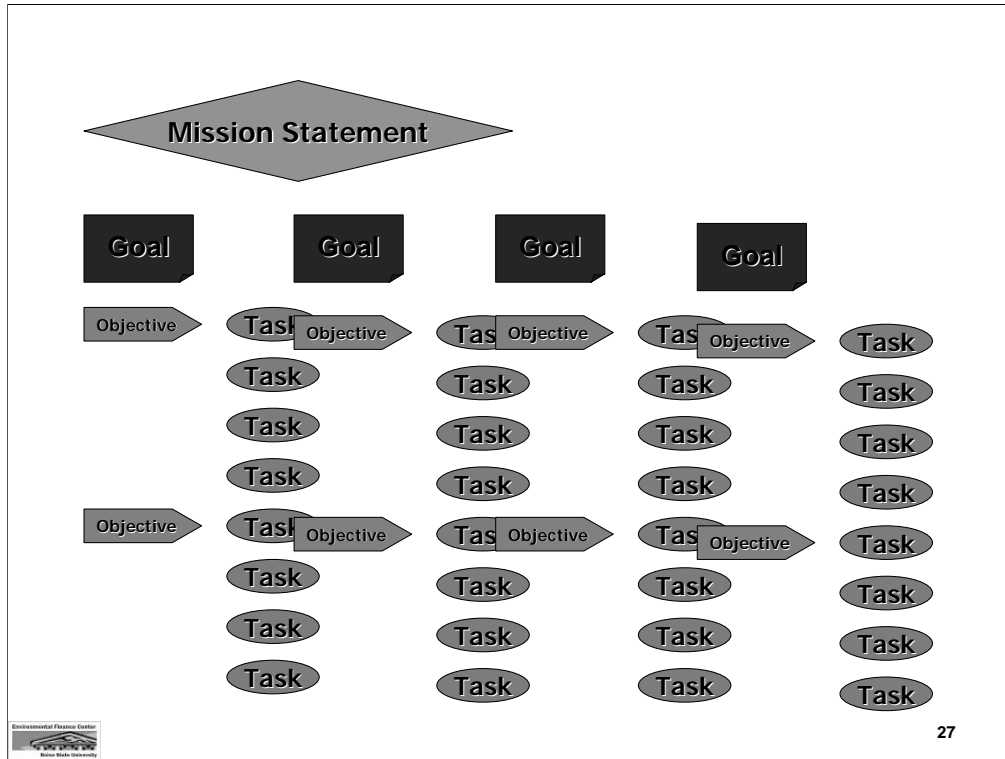
Objective

Objective

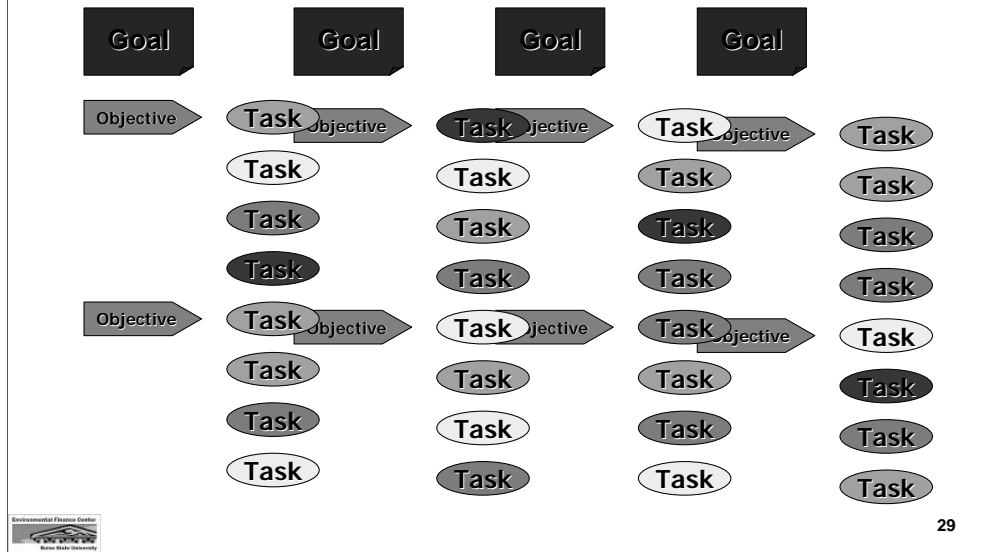
Objective

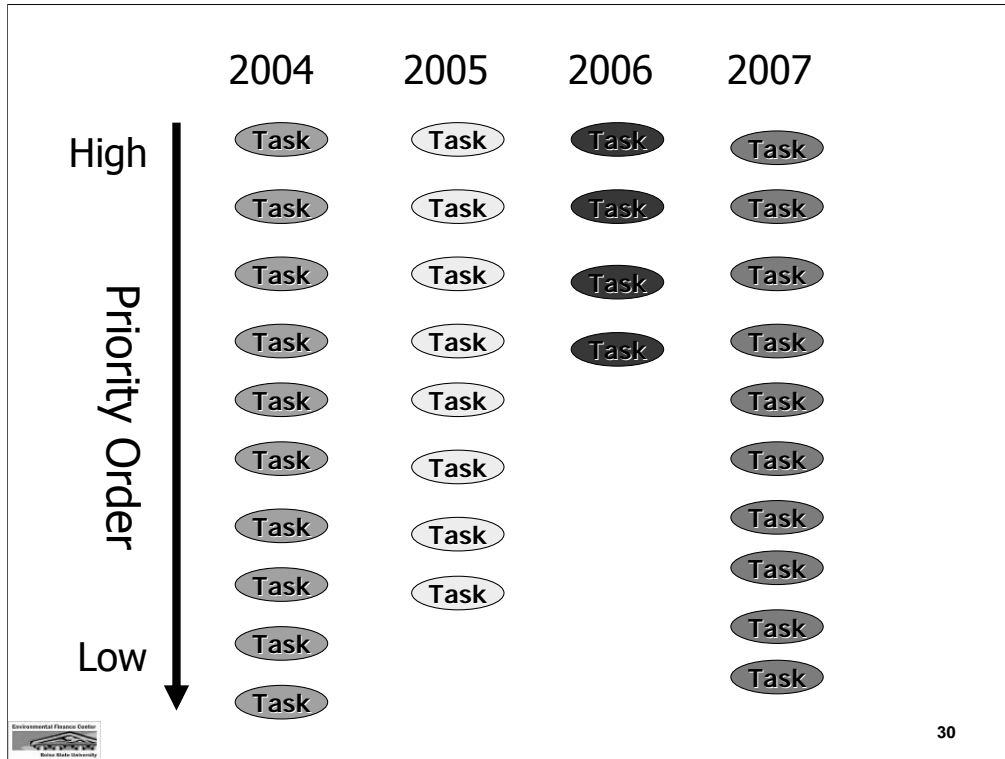
Objective





Since tasks can't be accomplished simultaneously,
tasks should be assigned to different years...



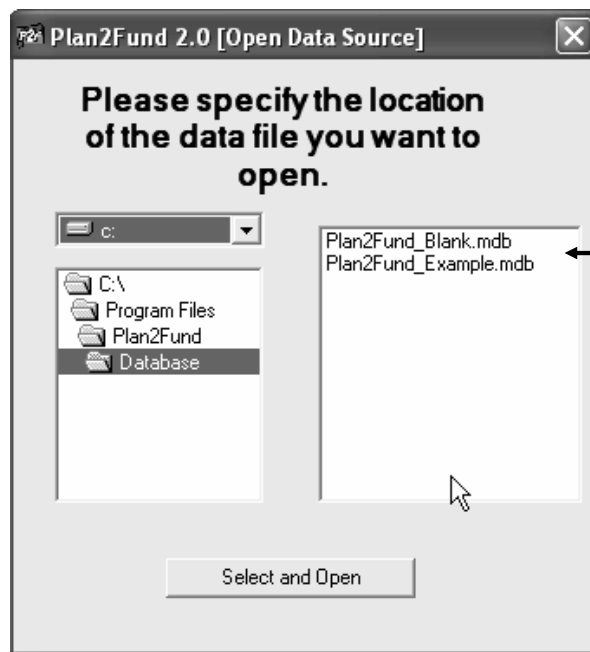


Questions



Demonstrate Plan2Fund™





When you open Plan2Fund, the Data Source screen will appear.

Highlight the Database you would like to open.



Then click on
"Select and Open"



PLANNING AND BUDGETING DATABASE

- Input Program Planning Data
- Input Task Financial Information
- Contact List
- Report Menu

Quit



To enter your program planning data, click on "Input Program Planning Data".



Plan2Fund 2.0 - [Program Goals]
File Help

Program Goals

Plan2Fund

Program Name:
Type of Organization:
Location:
Program Focus:
Mission Statement:

Goals:
List the Goals for the Program. When a Goal has been completed check (click) the "Complete" box.
Note: For record options, "Right-Click" to the left of the Goal Number field.

Goal No.	Description of Goal	Complete

After entering all the Goals, hit the "Go to Objective Input" button to input Objectives for each Goal.
Go To Objective Input

Return to Plan2Fund Main Page

Each screen in Plan2Fund has a help file located at the top of the screen. Click on 'Help' for information about using Plan2Fund.

Environmental Planning Center
Baylor State University

Plan2Fund Help

Hide

Back

Print

Options

Plan2Fund

Open Data File

Main Screen

Input Program Planning Data

Input Goals

Input Objectives

Input Tasks

Input Task Financial Information

Contact List

Report Menu

Plan2Fund - Plan2Fund Program Goals

Program Goals

Program Name:

Type of Organization:

Location:

Program Focus:

Mission Statement:

Goals

Goal No.

Description of Goal

Complete

Goal 1

Goal 2

Goal 3

Goal 4

Goal 5

New Goal

Save

Reset

The help file brings up information for the screen you are working on as well as a table of contents that can be used to locate information for other sections of Plan2Fund.

PROGRAM GOALS FORM

This form allows users to enter program information, mission statement and goals for the program.

Entering Program information
When data is entered into a field, the *Save* and *Reset* buttons will appear. To save the data click *Save*, or to undo the input or changes click *Reset*.

Entering Goals
Enter a Goal Number and a description for each Goal.

Environmental Planning Center

Bowling Green State University

37

37

Plan2Fund

Program Goals

Program Name:

Blue River Basin Watershed Restoration Plan

Type of Organization:

Non-profit - 501(c) 3 organization

Location:

Blue River Basin

Program Focus:

Water Quality

Mission Statement:

The mission of the Blue River Basin Watershed Council is to improve and enhance the quality of the Blue River in order to promote a healthy river, abundant wildlife and strong community.

Goals:

List the Goals for the Program. When a Goal has been completed check (click) the "Complete" box.

Note: For record options, "Right-Click" to the left of the Goal Number field.

Goal No.	Description of Goal	Complete
1	Reduce nonpoint source pollution from agricultural practices for improved water quality in the Blue River Basin	<input type="checkbox"/>
2	Protect and restore habitat for key ecological functions, target species, and biological communities in the Blue River Basin	<input type="checkbox"/>
3	Improve infrastructure and stormwater systems to reduce point source pollution for improved water quality in the Blue River Basin.	<input type="checkbox"/>
4	Monitor and assess watershed conditions and trends over time to gather missing data for decision making and ensure watershed plan goals and infrastructure are met	<input type="checkbox"/>

After entering all the Goals, hit the "Go to Objective Input" button to input Objectives for each Goal.

Go To Objective Input

Return to Plan2Fund Main Page

Enter program information including program name, location and mission statement.

Enter Goals

Once all goals have been entered, click on "Go to Objective Input" to enter objective information.

Environmental Planning Center

Baylor State University

38

Objectives for Goals

Plan2Fund

Goal: **Reduce nonpoint source pollution from agricultural practices for improved water quality in the Blue River Basin**

List all the Objectives for this Goal below:
When an Objective is complete, check it's "Complete" box. If you make a change to an objective you need to click "Save" to save it.

Objectives: *Note: For record options, "Right Click" to the left of the Objective Number field.*

Objective No.	Description of Objective	Complete
<input type="text" value="1"/>	Increase use of agricultural Best Management Practices for nutrient reduction and fertilizer use on crop land by 25%.	<input type="checkbox"/>
<input type="text" value="2"/>	Protect 3 miles of critical stream segments to reduce erosion and enhance habitat.	<input type="checkbox"/>
<input type="text"/>	<input type="text"/>	<input type="checkbox"/>

After listing All Objectives and prioritizing them, it's time to enter the tasks for each Objective.

Go to Task Input

Back to Watershed Program Goals

Return to Plan2Fund Main Page

Enter the objectives for each goal.

When the objectives for that goal has been entered, Click on "Go to Next Goal" to move to the next goal.

Environmental Planning Center
Browns State University

39

39

Objectives for Goals

Goal: 2

Protect and restore habitat for key ecological functions, target species, and biological communities in the Blue River Basin

The next goal will appear at the top of the page

List all the Objectives for this Goal below:
When an Objective is complete, check it's "Complete" box. If you make a change to an objective you need to click "Save" to save it.

Objectives: *Note: For record options: "Right Click" to the left of the Objective Number field.*

Objective No.	Description of Objective	Complete
1	Decrease fish mortality by 10% by improving fish access within the Blue River Basin through removal of barriers and installing culverts.	<input type="checkbox"/>
2	Construct 10 acres of wetlands along critical areas to reduce pollution, improve habitat, and reduce flooding in populated downstream areas.	<input type="checkbox"/>
		<input type="checkbox"/>

Back to Previous Goal

Go To Next Goal

Enter the objectives for the goal.

After listing All Objectives and prioritizing them, it's time to enter the tasks for each Objective.

Go to Task Input

Back to Watershed Program Goals

Return to Plan2Fund Main Page

Once all the objectives have been entered for all the goals, click on "Go to Task Input" to enter the task information.

40

Tasks for Objectives

Goal: 1

Reduce nonpoint source pollution from agricultural practices for improved water quality in the Blue River Basin

Objective: 1

Increase use of agricultural Best Management Practices for nutrient reduction and fertilizer use on cropland by 25%.

Back to Previous Objective

Go to Next Objective

The Goals and Objectives will appear at the top of the page

List each Task for this Objective below.

Tasks: *Note: For record options, right click to the left of the task number.*

Task Number	Task Description	Responsible Entity	Start Year
1	Provide one workshop on proper chemical handling and application.	King, Seth	2005
2	Distribute flyers to farmers and livestock operators addressing BMPs for nutrient reduction on cropland and livestock facilities. Provide information on financial incentives for implementation of BMPs.	Carol, Gary	2006
		Select	

After listing all Tasks for all Objective, it's time to prioritize your Tasks. Click on the "Prioritize Tasks" button at the right.

Prioritize Tasks

Back to Objective Input

Return to Plan2Fund Main Page

Enter the task description, responsible entity and start year for each objective of each goal.

Click "Go to Next Objective" to move to the next objective.

Environmental Planning Center

41

41

Tasks for Objectives

Goal: 1

Reduce nonpoint source pollution from agricultural practices for improved water quality in the Blue River Basin

Objective: 2

Protect 3 miles of critical stream segments to reduce erosion and enhance habitat.

Back to Previous Objective

Go to Next Objective

The next objective will appear at the top of the page.

List each Task for this Objective below.

Tasks: *Note: For record options, right click to the left of the task number.*

Task Number	Task Description	Responsible Entity	Start Year
3	Work with willing landowners to install fencing along 50 acres of critical stream bank.	Summit	2006
		Select	

After listing all Tasks for all Objective, it's time to prioritize your Tasks. Click on the "Prioritize Tasks" button at the right.

Prioritize Tasks

Back to Objective Input

Return to Plan2Fund

When all the tasks have been entered for all the objectives for each goal, click on "Prioritize Tasks" to enter the priority ranking for each task.

Environmental Planning Center

42

Prioritize Tasks

Prioritize each Task for this Start Year with a Task Priority Number. Number 1 being the highest priority. You must assign a different priority number to each task. Scroll down to prioritize all the Tasks. When a Task has been completed check (click) the "Complete" box.

Go to Previous Year

Go to Next Year

Click on "Go to Next Start Year" to move to the next year.

Enter the priority number for each task in the listed start year.

Goal: 2 Protect and restore habitat for key ecological functions, target species, and biological communities in the Blue River Basin

Objective: 1 Decrease fish mortality by 10% by improving fish access within the Blue River Basin through removal of barriers and installing culverts.

Task: Work with fish and wildlife agencies to conduct an assessment to identify potential fish barriers and locations.

Priority Complete ☐

Click the "Notes" Button to add notes for this Task.

NOTES

Goal: 1 Reduce nonpoint source pollution from agricultural practices for improved water quality in the Blue River Basin

Objective: 1 Increase use of agricultural Best Management Practices for nutrient reduction and fertilizer use on crop land by 25%.

Task: Provide one workshop on proper chemical handling and application.

Priority Complete ☐

Click the "Notes" Button to add notes for this Task.

Back to Tasks for Objectives

Return to Plan2Fund Main Page

Environmental Planning Center

Boise State University

Prioritize Tasks

Start Year: 2006
 Prioritize each Task for this Start Year with a Task Priority Number. Number 1 being the highest priority. You must assign a different priority number to each task. Scroll down to prioritize all the Tasks. When a Task has been completed check (click) the "Complete" box.

Go to Previous Year

Go to Next Year

The next start year will appear at the top of the page with the tasks for that year listed below.

Go to Previous Year

Go to Next Year

Enter the priority number for each task.

Once the priority numbers have been entered for each task, you are done entering the planning data. Click on the "Return to Plan2Fund Main Page"

Back to Tasks for Objectives

Return to Plan2Fund Main Page

Environmental Planning Center

Boise State University

44



PLANNING AND BUDGETING DATABASE

- Input Program Planning Data
- Input Task Financial Information
- Contact List
- Report Menu

Quit



After the planning data is entered, Click on “Input Task Financial Information” to enter the budget information.

Plan2Fund - [Plan2Fund: Task Financial Data]

Financial Data for Tasks

Goal: 1 Reduce nonpoint source pollution from agricultural practices for improved water quality in the Blue River Basin

Objective: 1 Increase use of agricultural Best Management Practices for nutrient reduction and fertilizer use on crop land by 25%.

Task: 1 Provide one workshop on proper chemical handling and application

Responsible Entity: Seth King Start Year: 2005 Task Priority: 2

Input the Financial Data for this Task for each Budget Category.

Task Expenses:

Budget Category	Expenses	Financial Contributions	Non-Financial Contributions	Awarded Grants	Total Balance Needed
Personnel	\$1,500.00	\$500.00	\$500.00	\$0.00	\$500.00
Fringe Benefits	\$0.00	\$0.00	\$0.00	\$0.00	\$0.00
Travel	\$500.00	\$250.00	\$0.00	\$0.00	\$250.00
Equipment	\$0.00	\$0.00	\$0.00	\$0.00	\$0.00
Supplies	\$100.00	\$0.00	\$0.00	\$0.00	\$100.00
Contractual	\$0.00	\$0.00	\$0.00	\$0.00	\$0.00
Construction	\$0.00	\$0.00	\$0.00	\$0.00	\$0.00
Other	\$0.00	\$0.00	\$0.00	\$0.00	\$0.00
Total Direct Costs	\$2,100.00	\$750.00	\$500.00	\$0.00	\$950.00
Indirect Charges	\$400.00	\$0.00	\$0.00	\$0.00	\$400.00
Total Costs	\$2,500.00	\$750.00	\$500.00	\$0.00	\$1,250.00

Track Grants

Back to Previous Task

Go to Next Task

Return to Plan2Fund Main Page

Goal, objective and task information are listed at the top of the page

Enter overall expenses of the task into the expense budget column.

Budget categories are listed to the side.

Environmental Planning Center
The University of Tennessee
Knoxville, TN 37996

Plan2Fund - [Plan2Fund: Task Financial Data]

File Help

Financial Data for Tasks

Plan2Fund

Goal: 1 Reduce nonpoint source pollution from agricultural practices for improved water quality in the Blue River Basin

Objective: 1 Increase use of agricultural Best Management Practices for nutrient reduction and fertilizer use on crop land by 25%.

Task: 1 Provide one workshop on proper chemical handling and application.

Responsible Entity: Seth King Start Year: 2005 Task Priority: 2

Input the Financial Data for this Task for each Budget Category.

Task Expenses:

Budget Category	Expenses	Financial Contributions	Non-Financial Contributions	Awarded Grants	Total Balance Budgeted
Personnel	\$1,500.00	\$500.00	\$500.00	\$0.00	\$500.00
Fringe Benefits	\$0.00	\$0.00	\$0.00	\$0.00	\$0.00
Travel	\$500.00	\$250.00	\$0.00	\$0.00	\$250.00
Equipment	\$0.00	\$0.00	\$0.00	\$0.00	\$0.00
Supplies	\$100.00	\$0.00	\$0.00	\$0.00	\$100.00
Contractual	\$0.00	\$0.00	\$0.00	\$0.00	\$0.00
Construction	\$0.00	\$0.00	\$0.00	\$0.00	\$0.00
Other	\$0.00	\$0.00	\$0.00	\$0.00	\$0.00
Total Direct Costs	\$2,100.00	\$750.00	\$500.00	\$0.00	\$950.00
Indirect Charges	\$400.00	\$0.00	\$0.00	\$0.00	\$400.00
Total Costs	\$2,500.00	\$750.00	\$500.00	\$0.00	\$1,250.00

Track Grants

Return to Plan2Fund Main Page

When you click on a cell to enter financial contributions, a new form will appear.

Back to Previous Task

Go to Next Task

Environmental Planning Center

The University of Tennessee

ContributionsForm

Financial Contributions

Plan2Fund

Goal: 1

Reduce nonpoint source pollution from agricultural practices for improved water quality in the Blue River Basin

Objective: 1

Increase use of agricultural Best Management Practices for nutrient reduction and fertilizer use on crop land by 25%.

Task: 2

Distribute flyers to farmers and livestock operators addressing BMPs for nutrient reduction on cropland and livestock facilities. Provide information on financial incentives for implementation of BMPs.

Budget Category: Personnel

Contributor	Amount Pledged	Date Pledged	Date Received	Amount Received
Mrs. White	\$1,000.00	12/25/2004	12/26/2004	\$500.00

In the Financial Contributions Form, enter the name of the contributor, the date and amount pledged, and the date and amount received.

Total Expense: \$2,098.00

Total Pledged: \$1,000.00

Total Received: \$500.00

Close

Environmental Planning Center

Iowa State University

Plan2Fund - [Plan2Fund: Task Financial Data]

FileHelp

Financial Data for Tasks

Plan2Fund

Goal: 1 Reduce nonpoint source pollution from agricultural practices for improved water quality in the Blue River Basin

Objective: 1 Increase use of agricultural Best Management Practices for nutrient reduction and fertilizer use on crop land by 25%.

Task: 1 Provide one workshop on proper chemical handling and application.

Responsible Entity: Seth King Start Year: 2005 Task Priority: 2

Input the Financial Data for this Task for each Budget Category.

Task Expenses:

Budget Category	Expenses	Financial Contributions	Non-Financial Contributions	Awarded Grants	Total Balance Needed
Personnel	\$1,500.00	\$500.00	\$500.00	\$0.00	\$500.00
Fringe Benefits	\$0.00	\$0.00	\$0.00	\$0.00	\$0.00
Travel	\$500.00	\$250.00	\$0.00	\$0.00	\$250.00
Equipment	\$0.00	\$0.00	\$0.00	\$0.00	\$0.00
Supplies	\$100.00	\$0.00	\$0.00	\$0.00	\$100.00
Contractual	\$0.00	\$0.00	\$0.00	\$0.00	\$0.00
Construction	\$0.00	\$0.00	\$0.00	\$0.00	\$0.00
Other	\$0.00	\$0.00	\$0.00	\$0.00	\$0.00
Total Direct Costs	\$2,100.00	\$750.00	\$500.00	\$0.00	\$850.00
Indirect Charges	\$400.00	\$0.00	\$0.00	\$0.00	\$400.00
Total Costs	\$2,500.00	\$750.00	\$500.00	\$0.00	\$1,250.00

Track Grants

Back to Previous Task
Go to Next Task

When you click on a cell to enter non-financial contributions, a new form will appear.

Return to Plan2Fund Main Page

Environmental Planning Center
The Ohio State University
Bioscience Resource Project

ContributionsForm
Plan2Fund™

Non-Financial Contributions

Goal: 1 Reduce nonpoint source pollution from agricultural practices for improved water quality in the Blue River Basin

Objective: 1 Increase use of agricultural Best Management Practices for nutrient reduction and fertilizer use on crop land by 25%.

Task: 2 Distribute flyers to farmers and livestock operators addressing BMPs for nutrient reduction on cropland and livestock facilities. Provide information on financial incentives for implementation of BMPs.

Budget Category: Personnel

Contributor	Description	Estimated Value Pledged	Date Pledged	Date Received	Estimated Received Value
Boy Scouts	Volunteers	\$1,000.00	12/15/2004		\$500.00

For each budget category, enter the contributors name, a description of the contribution, the date and estimated value pledged, and the date and estimated amount received.

Total Expense: \$2,098.00
 Total Pledged: \$1,000.00
 Total Received: \$500.00

Close

Environmental Planning Center

 Missouri State University

50

Plan2Fund - [Plan2Fund: Task Financial Data]

File Help

Financial Data for Tasks

Goal: 1 Reduce nonpoint source pollution from agricultural practices for improved water quality in the Blue River Basin

Objective: 1 Increase use of agricultural Best Management Practices for nutrient reduction and fertilizer use on crop land by 25%.

Task: 1 Provide one workshop on proper chemical handling and application

Responsible Entity: Seth King Start Year: 2005 Task Priority: 2

Input the Financial Data for this Task for each Budget Category.

Task Expenses:

Budget Category	Expenses	Financial Contributions	Non-Financial Contributions	Awarded Grants	Total Balance Needed
Personnel	\$1,500.00	\$500.00	\$500.00	\$0.00	\$500.00
Fringe Benefits	\$0.00	\$0.00	\$0.00	\$0.00	\$0.00
Travel	\$500.00	\$250.00	\$0.00	\$0.00	\$250.00
Equipment	\$0.00	\$0.00	\$0.00	\$0.00	\$0.00
Supplies	\$100.00	\$0.00	\$0.00	\$0.00	\$100.00
Contractual	\$0.00	\$0.00	\$0.00	\$0.00	\$0.00
Construction	\$0.00	\$0.00	\$0.00	\$0.00	\$0.00
Other	\$0.00	\$0.00	\$0.00	\$0.00	\$0.00
Total Direct Costs	\$2,100.00	\$750.00	\$500.00	\$0.00	\$950.00
Indirect Charges	\$400.00	\$0.00	\$0.00	\$0.00	\$400.00
Total Costs	\$2,500.00	\$750.00	\$500.00	\$0.00	\$1,250.00

Track Grants

Return to Plan2Fund Main Page

Back to Previous Task

Go to Next Task

When you click on a cell to enter grant information, a new form will appear.

Environmental Planning Center

Iowa State University

51

Plan2Fund: Grant Tracking

Grant Tracking

Goal:
1
Reduce nonpoint source pollution from agricultural practices for improved water quality in the Blue River Basin

Objective:
1
Increase use of agricultural Best Management Practices for nutrient reduction and fertilizer use on crop land by 25%.

Task:
2
Distribute flyers to farmers and livestock operators addressing BMPs for nutrient reduction on cropland and livestock facilities. Provide information on financial incentives for implementation of BMPs.

Task Notes

Start Year:
2006
Task Priority No.:
6
Responsible Entity:
Gary Carrol

Grant Program Name	Sponsor	Contact Name	Application Deadline	Application Submitted	Submission Date	Amount Requested	Awarded	Date Awarded	Award Amount	Denied
EPA Grant	EPA	Jane Smith	6/15/2005	<input checked="" type="checkbox"/>	2/15/2005	\$5,500.00	<input checked="" type="checkbox"/>	4/15/2005	\$3,500.00	<input type="checkbox"/>
USDA Grant	USDA	Bill Johnson	3/15/2005	<input checked="" type="checkbox"/>	4/15/2005	\$4,500.00	<input type="checkbox"/>		\$0.00	<input type="checkbox"/>
				<input type="checkbox"/>			<input type="checkbox"/>			<input type="checkbox"/>

When finished, click Exit to return to Financial Data for Tasks

Exit

Enter the grant name, sponsor and the contact information for the grant. Also enter the information on the application deadline, date submitted, amount requested, the date and amount awarded.

Environmental Planning Center
Borzo State University

Plan2Fund: [Plan2Fund: Task Financial Data]

Plan2Fund: Grant Tracking

Goal: 1 Reduce nonpoint source pollution from agricultural practices for improved water quality in the Blue River Basin

Objective: or nutrient reduction and fertilizer use on crop land by 25%

Task: rators addressing BMP's for nutrient reduction on mation on financial incentives for

Start Year: 2005

Grant Program: EPA Grant

Responsible Entity: Gary Carrol

Location	Application Date	Submitted Date	Amount Requested	Awarded	Date Awarded	Award Amount	Denied
15/2005	<input checked="" type="checkbox"/>	2/15/2005	\$5,500.00	<input checked="" type="checkbox"/>	4/15/2005	\$3,500.00	<input type="checkbox"/>
15/2005	<input checked="" type="checkbox"/>	4/15/2005	\$4,500.00	<input type="checkbox"/>		\$0.00	<input type="checkbox"/>
	<input type="checkbox"/>			<input type="checkbox"/>			<input type="checkbox"/>

Grant Budget Assign Form

Grant Financial Data Input

Grant Program Name: EPA Grant

Budget Category	Amount Requested	Amount Awarded
Personnel	\$2,000.00	\$1,000.00
Fringe Benefits	\$1,000.00	\$500.00
Travel	\$0.00	\$0.00
Equipment	\$0.00	\$0.00
Supplies	\$2,000.00	\$1,500.00
Contractual	\$0.00	\$0.00
Construction	\$0.00	\$0.00
Other	\$0.00	\$0.00
Indirect Charges	\$500.00	\$500.00
Total Requested/Awarded	\$5,500.00	\$3,500.00

When finished, click Exit to return to Financial Data for Tasks

Exit

When you click on the received and awarded amount field, a new form will appear. Enter the grant budget information for each budget category in the new form. The totals will automatically be entered in the grant tracking sheet.

Plan2Fund: Grant Tracking

Plan2Fund

Grant Tracking

Goal: 1 Reduce nonpoint source pollution from agricultural practices for improved water quality in the Blue River Basin

Objective: 1 Increase use of agricultural Best Management Practices for nutrient reduction and fertilizer use on crop land by 25%.

Task: 2 Distribute flyers to farmers and livestock operators addressing BMPs for nutrient reduction on cropland and livestock facilities. Provide information on financial incentives for implementation of BMPs. Task Notes

Start Year: 2006 Task Priority No.: 6 Responsible Entity: Gary Carrol

Grant Program Name	Sponsor	Contact Name	Application Deadline Date	Application Submitted	Submital Date	Amount Requested	Awarded	Date Awarded	Award Amount	Denied
EPA Grant	EPA	Jane Smith	6/15/2005	<input checked="" type="checkbox"/>	2/15/2005	\$5,500.00	<input checked="" type="checkbox"/>	4/15/2005	\$3,500.00	<input type="checkbox"/>
USDA Grant	USDA	Bill Johnson	3/15/2005	<input checked="" type="checkbox"/>	4/15/2005	\$4,500.00	<input type="checkbox"/>		\$0.00	<input type="checkbox"/>
				<input type="checkbox"/>			<input type="checkbox"/>			<input type="checkbox"/>

When finished, click Exit to return to Financial Data for Tasks

Exit

Plan2Fund: Task Notes

File Format

Goal: 1

Reduce nonpoint source pollution from agricultural practices for improved water quality in the Blue River Basin

Objective:

1 Increase use of agricultural Best Management Practices for nutrient reduction and fertilizer use on crop land by 25%

Task:

2 Distribute flyers to farmers and livestock operators addressing BMPs for nutrient reduction on cropland and livestock facilities. Provide information on finon

Notes:

Close

Plan2Fund

es for improved water quality in the Blue River Basin

ces for nutrient reduction and fertilizer use on crop land by 25%.

operators addressing BMPs for nutrient reduction on information on financial incentives for

Task Notes

Responsible Entity: Gary Carrol

Application Deadline	Application Submitted	Submital Date	Amount Requested	Awarded	Date Awarded	Award Amount	Denied
6/15/2005	<input checked="" type="checkbox"/>	2/15/2005	\$5,500.00	<input checked="" type="checkbox"/>	4/15/2005	\$3,500.00	<input type="checkbox"/>
3/15/2005	<input checked="" type="checkbox"/>	4/15/2005	\$4,500.00	<input type="checkbox"/>		\$0.00	<input type="checkbox"/>
	<input type="checkbox"/>			<input type="checkbox"/>			<input type="checkbox"/>

When finished, click Exit to return to Financial Data for Tasks

Exit

You can use the "Task Notes" form to add additional notes and detailed information for each task.

Environmental Planning Center
Baylor State University

55

55

Financial Data for Tasks

Goal: 1 Reduce nonpoint source pollution from agricultural practices for improved water quality in the Blue River Basin

Objective: 1 Increase use of agricultural Best Management Practices for nutrient reduction and fertilizer use on crop land by 25%.

Task: 2 Distribute flyers to farmers and livestock operators addressing BMPs for nutrient reduction on cropland and livestock facilities; information on financial incentives for implementation of BMPs.

Responsible Entity: Gary Carol

Start Year: 2006

Task Priority: 6

Input the Financial Data for this Task for each Budget Category.

Task Expenses:

Budget Category	Expenses	Financial Contributions	Non-Financial Contributions	Awarded Grants	Total Balance Needed
Personnel	\$2,098.00	\$500.00	\$500.00	\$1,000.00	\$90.00
Fringe Benefits	\$1,000.00	\$65.00	\$0.00	\$500.00	\$435.00
Travel	\$0.00	\$0.00	\$0.00	\$0.00	\$0.00
Equipment	\$0.00	\$0.00	\$0.00	\$0.00	\$0.00
Supplies	\$2,000.00	\$0.00	\$500.00	\$1,500.00	\$0.00
Contractual	\$0.00	\$0.00	\$0.00	\$0.00	\$0.00
Construction	\$0.00	\$0.00	\$0.00	\$0.00	\$0.00
Other	\$0.00	\$0.00	\$0.00	\$0.00	\$0.00
Total Direct Costs	\$5,098.00	\$565.00	\$1,000.00	\$3,000.00	\$533.00
Indirect Charges	\$500.00	\$0.00	\$0.00	\$500.00	\$0.00
Total Costs	\$5,598.00	\$565.00	\$1,000.00	\$3,500.00	\$533.00
				Track Grants	

Once all the budget information has been entered, a balance needed amount will be totaled for the task.

Back to Previous Task

Go to Next Task

To enter budget information for the next task, click on "Go to Next Task"

Return to Plan2Fund Main Page

Financial Data for Tasks



Goal: 1 Reduce nonpoint source pollution from agricultural practices for improved water quality in the Blue River Basin

Objective: 1 Increase use of agricultural Best Management Practices for nutrient reduction and fertilizer use on crop land by 25%.

Task: 2 Distribute flyers to farmers and livestock operators addressing BMPs for nutrient reduction on cropland and livestock facilities. Provide information on financial incentives for implementation of BMPs.

Responsible Entity: Gary Carol

Start Year: 2006

Task Priority: 6

Input the Financial Data for this Task for each Budget Category.

Task Expenses:

Budget Category	Expenses	Financial Contributions	Non-Financial Contributions	Awarded Grants	Total Balance Needed
Personnel	\$2,098.00	\$500.00	\$500.00	\$1,000.00	\$90.00
Fringe Benefits	\$1,000.00	\$65.00	\$0.00	\$500.00	\$435.00
Travel	\$0.00	\$0.00	\$0.00	\$0.00	\$0.00
Equipment	\$0.00	\$0.00	\$0.00	\$0.00	\$0.00
Supplies	\$2,000.00	\$0.00	\$500.00	\$1,500.00	\$0.00
Contractual	\$0.00	\$0.00	\$0.00	\$0.00	\$0.00
Construction	\$0.00	\$0.00	\$0.00	\$0.00	\$0.00
Other	\$0.00	\$0.00	\$0.00	\$0.00	\$0.00
Total Direct Costs	\$5,098.00	\$565.00	\$1,000.00	\$3,000.00	\$533.00
Indirect Charges	\$500.00	\$0.00	\$0.00	\$500.00	\$0.00
Total Costs	\$5,598.00	\$565.00	\$1,000.00	\$3,500.00	\$533.00

Track Grants

Back to Previous Task

Go to Next Task

Return to Plan2Fund Main Page

When the budget information has been entered for all the tasks, you are done entering the financial data. Click on "Return to Plan2Fund Main Page" to return to the main page.



PLANNING AND BUDGETING DATABASE

- ☐ Input Program Planning Data
- ☐ Input Task Financial Information
- ☐ Contact List
- ☐ Report Menu

To add or edit a contact,
click on "Contact List".

☐ Quit



ContactForm

Responsible Entities

Close

First Name

Seth

Last Name

King

Organization

Address

1234 Main Street

City

Boise

State

ID

Email Address

sking@tng-boi.com

Zip Code

83702

Phone Number

208-422-9140

Active

☒

You can scroll through the contacts entered, edit information, delete contacts or add a new contact

Delete

<<

<


Record: 1

6

>

>>

New

Environmental Planning Center
Boise State University

59



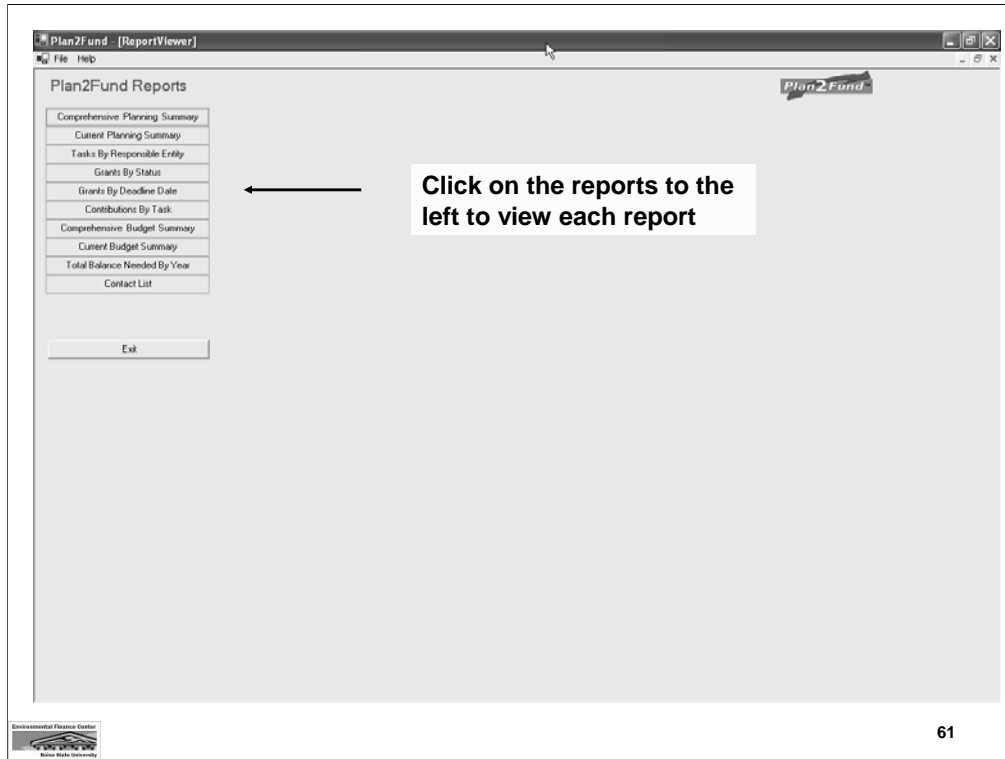
PLANNING AND BUDGETING DATABASE

- ☐ Input Program Planning Data
- ☐ Input Task Financial Information
- ☐ Contact List
- ☐ Report Menu

**To view reports, click
on "Reports Menu"**

☐ Quit





Plan2Fund - [ReportViewer]

File Help

Plan2Fund Reports

Close Report

Plan2Fund

MainReport

Comprehensive Planning Summary

8/2/2005

Goal: 1

Reduce nonpoint source pollution from quality in the Blue River Basin

Goal Complete: No

Objective: 1

Increase use of agricultural Best Management on crop land by 25%.

Objective Complete: No

Responsible Entity: Gary Carroll

Task: 2

Distribute flyers to farmers and livestock operators livestock facilities. Provide information on financial

Complete: Yes

Start Year: 2006

Task Priority No. 6

Responsible Entity: Seth King

Task: 1

Provide one workshop on proper chemical handling and application.

Complete: No

Start Year: 2005

Task Priority No. 2

The Comprehensive Planning Summary Report lists all (completed and uncompleted) Goals, Objectives, and Tasks in numeric order of Goal, Objective, and Task.

Current Page No: 1

Total Page No: 4

Zoom Factor: 100%

Environmental Planning Center

Bowling Green State University

Plan2Fund [ReportViewer]

File Help

Plan2Fund Reports

Close Report

Plan2Fund

MainReport

Current Planning Summary

8/2/2005

Goal: 1

Goal Complete: No

Reduce nonpoint source pollution from agricultural practices for improved water quality in the Blue River Basin

Objective:

Objective Complete: No

Increase use of agricultural Best Management Practices on cropland by 25%.

Responsible Entity: Seth King

Task: 1

Task Completed: No

Provide one workshop on proper chemical handling

Start Year: 2005

Task Priority No. 2

Objective:

Objective Complete: No

Protect 3 miles of critical stream segments to reduce erosion and enhance habitat.

Responsible Entity: Seth King

Current Page No: 1

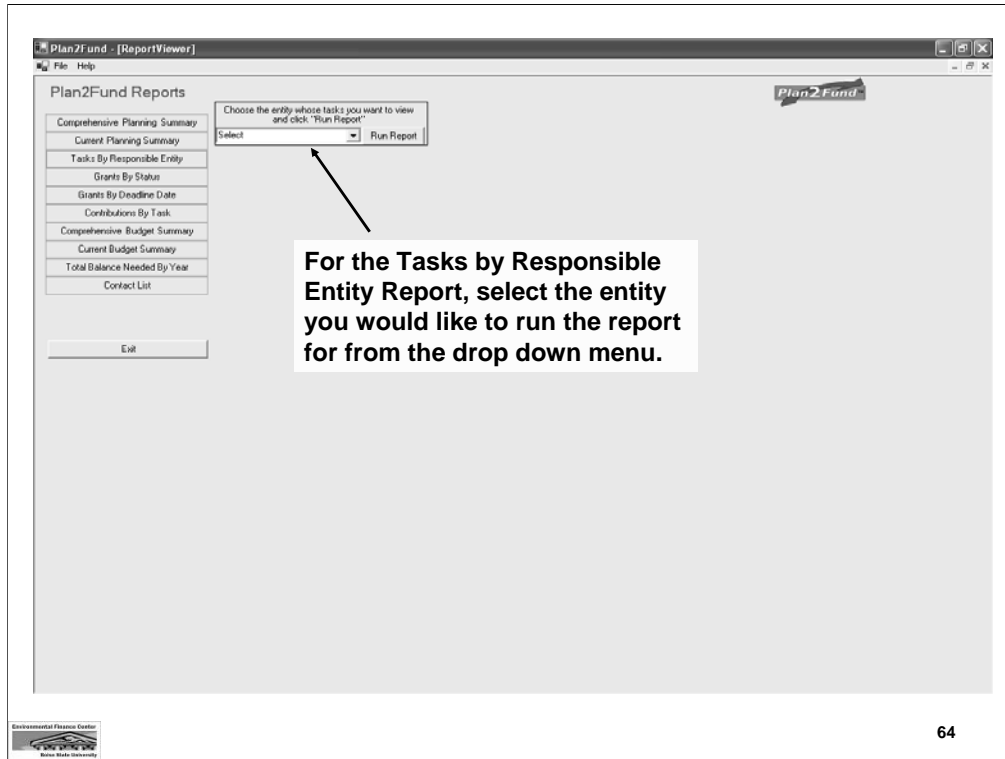
Total Page No: 4

Zoom Factor: 100%

Environmental Planning Center

Iowa State University

The Current Planning Summary Report lists all *uncompleted* Goals, Objectives, and Tasks in numeric order of Goal, Objective, and Task.



Plan2Fund - [ReportViewer]

File Help

Plan2Fund Reports

Close Report

Plan2Fund

Main Report

Tasks By Responsible Entity

Responsible Entity: Gary Carrol

Goal: 2 Protect and restore habitat for key ecological functions, target

Objective: 1 Decrease fish mortality by 10% by improving fish access wi

Task: 1 Work with fish and wildlife agencies to conduct an assessment to i

Task Start Year: 2005

Task Priority No.: 1

Goal: 3 Improve infrastructure and stormwater systems to reduce point source pollution for improved water quality in the

Objective: 1 Work with the the county to develop a community septic / sewer system in densely populated areas within the

Task: 1 Work with the county to evaluate sites to determine need, cost and feasibility. This includes meeting with city and

Task Start Year: 2006

Task Priority No.: 5

Goal: 1 Reduce nonpoint source pollution from agricultural practices for improved water quality in the Blue River Basin

Objective: 1 Increase use of agricultural Best Management Practices for nutrient reduction and fertilizer use on crop land by

Task: 2 Distribute flyers to farmers and livestock operators addressing BMPs for nutrient reduction on cropland and livestock

Task Start Year: 2006


Task Priority No.: 6

Current Page No: 1

Total Page No: 1

Zoom Factor: 100%

Environmental Planning Center



Baylor University

The Task by Responsible Entity Report creates a report of all the tasks that the entity you selected is responsible for.

Plan2Fund [ReportViewer]

File Help

Plan2Fund Reports

Close Report

Plan2Fund

MainReport

Grant Tracking By Status

Goal: 1 Reduce nonpoint source pollution from ag

Objective: 1 Increase use of agricultural Best Management Practices for nutrient reduction and fertilizer use on crop land by 4.7%.

Task: 1 Provide one workshop on proper chemical handling and application.

Task Start Year: 2005 Task Priority No.: 2

Submitted

Grant Program Name	Sponsor	Contact Name	Application Deadline Date	Submit Date	Amount Requested	Date Awarded	Amount Awarded
Education Grant	EPA	Mr. Smith	12/15/2001	12/15/2001	\$700.00	1/30/2004	\$700.00

Task: 2 Distribute flyers to farmers and livestock operators addressing BMPs for nutrient reduction on cropland and livestock facilities. Provide information on financial incentives for implementation of BMPs.

Task Start Year: 2006 Task Priority No.: 6

Awarded

Grant Program Name	Sponsor	Contact Name	Application Deadline Date	Submit Date	Amount Requested	Date Awarded	Amount Awarded
EPA Grant	EPA	Jane Smith	6/15/2005	2/15/2005	\$5,500.00	4/15/2005	\$3,500.00

Current Page No: 1

Total Page No: 5

Zoom Factor: 100%

Environmental Planning Center

Browns State University

Grants by Status Report lists grants being pursued for each Task in the following order: Awarded, Submitted, and Remaining.

This report also lists any task notes. Tasks are listed by priority (highest to lowest).

Plan2Fund - [ReportViewer]

File Help

Plan2Fund Reports

Close Report

Plan2Fund

ManReport

Grant Tracking - By Deadline Date

Goal: 3 Improve infrastructure and stormwater systems to reduce point source pollution

Objective: 1 Work with the the county to develop a community septic / sewer system in densely populated areas within the county where city services are not available.

Task: 2 Work with the county to design a community sewage system.

Task Start Year: 2007 **Task Priority No.:** 4

Grant Program Name	Sponsor	Contact Name	Application Deadline Date	Submit Date	Amount Requested	Date Awarded	Amount Awarded
Waster Water Grant	EPA	Ms. Thomas	12/1/2006		\$7,700.00		\$0.00

Task Notes:

Grants by Deadline Date Report lists grants being pursued by submittal deadline date.

Current Page No: 1

Total Page No: 1

Zoom Factor: 100%

Environmental Planning Center

Bowling Green State University

67

67

Plan2Fund - [ReportViewer]

File Help

Plan2Fund Reports

Close Report

Plan2Fund

Main Report

Contributions

Goal: 1 Reduce nonpoint source pollution from agricultural practices

Objective: 1 Increase use of agricultural Best Management Practices for nutrient reduction and fertilizer use on crop land by 25%.

Task: 1 Provide one workshop on proper chemical handling and application.

Budget Category: Personnel

Financial Contributions

Contributor	Amount Pledged	Date Pledged	Date Received	Amount Received
John Doe	\$500.00	12/15/2002	1/15/2005	\$500.00
Totals:	500.00			500.00

Non-Financial Contributions

Contributor	Description	Estimated Value	Date Pledged	Date Received	Estimated Actual Value
Volunteer	present workshop	\$500.00	2/15/2005	1/16/2005	\$500.00
Totals:		\$500.00			\$500.00

Current Page No: 1

Total Page No: 6

Zoom Factor: 100%

Environmental Planning Center

Baylor University

Contributions by Task Report lists the financial and non-financial contributions by Task. Tasks are listed in numeric order of Goal, Objective, and Task.

Plan2Fund - [ReportViewer]

File Help

Plan2Fund Reports

Close Report

Plan2Fund

MainReport

Comprehensive Budget Summary

Goal: 1 Reduce nonpoint source pollution from agricultural practices for in River Basin

Objective: 1 Increase use of agricultural Best Management Practices fo fertilizer use on crop land by 25%.

Budget Summary for Objective:

Expenses	Financial Contributions	Non-Financial Contributions	Grants Awarded	Balance Needed
\$ 8,098.00	\$ 1,565.00	\$ 2,018.00	\$ 3,500.00	\$ 1,015.00

Responsible Entity: Carrol, Gary

Task Priority No.: 6 **Start Year:** 2006

Task: 2 Distribute flyers to farmers and livestock operators addressing BMPs for nutrient reduction on cropland and livestock facilities. Provide information on financial incentives for implementation of BMPs.

Budget Category	Expense	Financial Contributions	Non-Financial Contributions	Grants Awarded	Balance Needed
Personnel	\$ 2,098.00	\$ 500.00	\$ 1,000.00	\$ 1,000.00	\$-402.00
Fringe Benefits	\$ 1,000.00	\$ 65.00	\$ 0.00	\$ 500.00	\$ 435.00
Travel	\$ 0.00	\$ 0.00	\$ 0.00	\$ 0.00	\$ 0.00
Equipment	\$ 0.00	\$ 0.00	\$ 15.00	\$ 0.00	\$-15.00
Supplies	\$ 2,000.00	\$ 0.00	\$ 500.00	\$ 1,500.00	\$ 0.00
Contractual	\$ 0.00	\$ 0.00	\$ 0.00	\$ 0.00	\$ 0.00
Construction	\$ 0.00	\$ 0.00	\$ 0.00	\$ 0.00	\$ 0.00
Other	\$ 0.00	\$ 0.00	\$ 0.00	\$ 0.00	\$ 0.00
Total Direct Costs	\$ 5,098.00	\$ 565.00	\$ 1,515.00	\$ 3,000.00	\$ 18.00
Indirect Charges	\$ 500.00	\$ 0.00	\$ 0.00	\$ 500.00	\$ 0.00
Total	\$ 5,598.00	\$ 565.00	\$ 1,515.00	\$ 3,500.00	\$ 18.00

Current Page No: 1

Total Page No: 12

Zoom Factor: 100%

Environmental Planning Center

Plan2Fund - [ReportViewer]

File Help

Plan2Fund Reports

Close Report

Plan2Fund

MainReport

Current Budget Summary

Goal: 1 Reduce nonpoint source pollution from agricultural River Basin

Objective: 1 Increase use of agricultural Best Management Practices on crop land by 25%.

Budget Summary for Objective:				
Expenses	Financial Contributions	Non-Financial Contributions	Grants Awarded	Balance Needed
\$ 2,500.00	\$ 1,000.00	\$ 503.00	\$ 0.00	\$ 997.00

Task Priority No.: 2 Start Year: 2005

Task: 1 Provide one workshop on proper chemical handling and application.

Responsible Entity: King, Seth

Budget Category	Expense	Financial Contributions	Non-Financial Contributions	Grants Awarded	Balance Needed
Personnel	\$1,500.00	\$500.00	\$500.00	\$0.00	\$500.00
Fringe Benefits	\$0.00	\$0.00	\$0.00	\$0.00	\$0.00
Travel	\$500.00	\$500.00	\$3.00	\$0.00	-\$3.00
Equipment	\$0.00	\$0.00	\$0.00	\$0.00	\$0.00
Supplies	\$100.00	\$0.00	\$0.00	\$0.00	\$100.00
Contractual	\$0.00	\$0.00	\$0.00	\$0.00	\$0.00
Construction	\$0.00	\$0.00	\$0.00	\$0.00	\$0.00

Current Page No: 1

Total Page No: 11

Zoom Factor: 100%

The Current Budget Summary Report gives a budget summary for each *uncompleted* Objective, followed by the detailed budget for each corresponding *uncompleted* tasks within that objective.

Environmental Planning Center

Baylor University

Plan2Fund - [ReportViewer]

File Help

Plan2Fund Reports

Close Report

Plan2Fund

MainReport

Total Balance Needed By Year

8/2/2005

BudgetCategoryName	Expense	Financial Contributions	NonFinancial Contributions	Grants	Balance Needed
Start Year 2005					
Personnel	\$ 4,000.00	\$ 500.00	\$ 1,500.00	\$ 2,250.00	\$ 0.00
Fringe Benefits	\$ 1,000.00	\$ 0.00	\$ 0.00	\$ 500.00	\$ 500.00
Travel	\$ 1,000.00	\$ 250.00	\$ 0.00	\$ 750.00	\$ 0.00
Equipment	\$ 0.00	\$ 0.00	\$ 0.00	\$ 0.00	\$ 0.00
Supplies	\$ 100.00	\$ 0.00	\$ 0.00	\$ 100.00	\$ 0.00
Contractual	\$ 0.00	\$ 0.00	\$ 0.00	\$ 0.00	\$ 0.00
Construction	\$ 0.00	\$ 0.00	\$ 0.00	\$ 0.00	\$ 0.00
Other	\$ 0.00	\$ 0.00	\$ 0.00	\$ 0.00	\$ 0.00
Indirect Charges	\$ 1,400.00	\$ 0.00	\$ 0.00	\$ 700.00	\$ 700.00
Totals For 2005	\$ 7,500.00	\$ 750.00	\$ 1,500.00	\$ 4,300.00	\$ 1,200.00
Start Year 2006					
Personnel	\$ 38,500.00	\$ 0.00	\$ 0.00	\$ 15,000.00	\$ 1,000.00
Fringe Benefits	\$ 10,400.00	\$ 0.00	\$ 0.00	\$ 5,000.00	\$ 0.00
Travel	\$ 5,200.00	\$ 0.00	\$ 0.00	\$ 2,500.00	\$ 0.00
Equipment	\$ 2,000.00	\$ 0.00	\$ 0.00	\$ 1,000.00	\$ 0.00
Supplies	\$ 14,000.00	\$ 0.00	\$ 0.00	\$ 7,000.00	\$ 0.00
Contractual	\$ 15,000.00	\$ 0.00	\$ 0.00	\$ 7,500.00	\$ 0.00
Construction	\$ 0.00	\$ 0.00	\$ 0.00	\$ 0.00	\$ 0.00
Other	\$ 0.00	\$ 0.00	\$ 0.00	\$ 0.00	\$ 0.00
Indirect Charges	\$ 1,400.00	\$ 0.00	\$ 0.00	\$ 700.00	\$ 700.00
Totals For 2006	\$ 83,500.00	\$ 0.00	\$ 0.00	\$ 35,700.00	\$ 1,700.00

Current Page No: 1

Total Page No: 1

Environmental Planning Center

The Total Balance by Year Report presents the total balance of Expenses, Financial Contributions, Non-Financial Contributions, Grants, and the Balance Needed, by budget category for each start year.

Plan2Fund - [ReportViewer]

File Help

Plan2Fund Reports

Close Report

Plan2Fund

MainReport

Responsible Entities List

8/2/2005

Organization	First Name	Last Name	Email	Phone	Address	City	State	Zip Code
	Seth	King	sking@mg-bot.com	208-422-9140	1234 Main Street	Boise	ID	83702
	Gary	Carrol	gcarrol@bsu.edu	208-445-5546	2222 Apple Street	Boise	ID	83706
	Bob	Hope						
The Network Group	John	Wayne						
	fred	Flintstone	???	1		Bedrock	flatland	1
	Barney	Rubble						

The Contact List Report gives a list of the contact data for each responsible entity.

Current Page No: 1Total Page No: 1Zoom Factor: 100%

Environmental Planning Center

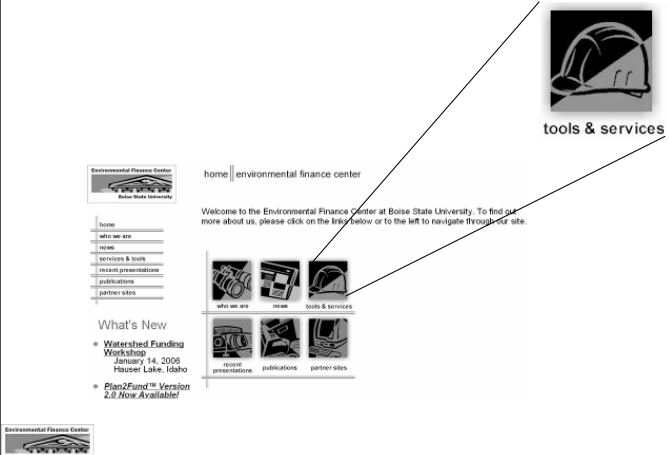
BOISE STATE UNIVERSITY

72

72

How Do I Get Plan2Fund?

1. Download From EFC Website



The screenshot shows the homepage of the Environmental Finance Center at Boise State University. The header includes the logo and the text "home | environmental finance center". A navigation menu on the left lists: home, who we are, who we serve, services & tools, recent presentations, publications, and partner sites. The main content area features a "Welcome" message and a grid of icons for "who we are", "who we serve", "tools & services", "recent presentations", "publications", and "partner sites". An arrow points from the "tools & services" icon in the grid to a larger icon of a hard hat with the text "tools & services" below it. To the right of this larger icon, the text "Click on 'Tools and Services'" is displayed.

Click on
"Tools and
Services"

73

How Do I Get Plan2Fund?

1. Download From EFC Website

- Requirements:
 - Must have .NET Framework (download free)
 - Must have WinZip or a similar program (download evaluation version free)
- Detailed Instructions on Website

2. Request a copy on CD-ROM



Questions

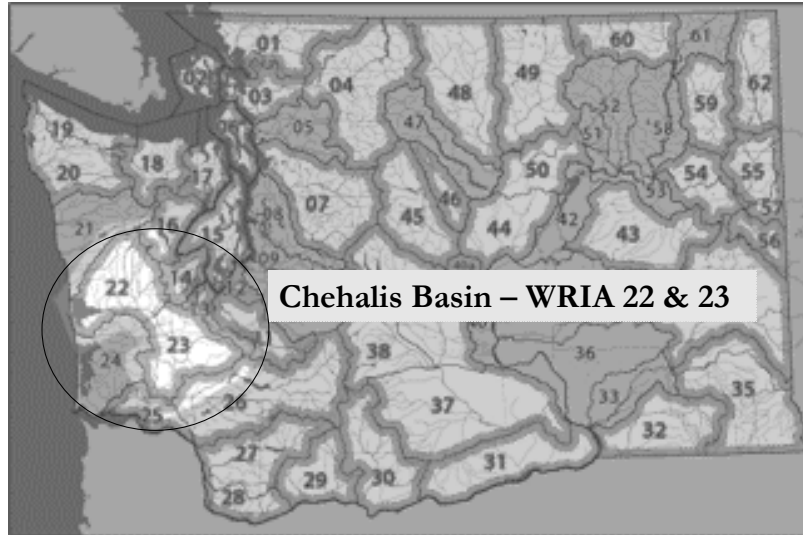


Chehalis Basin Partnership

Who We Are

- Partners and Members
- Watershed Characteristics and Location

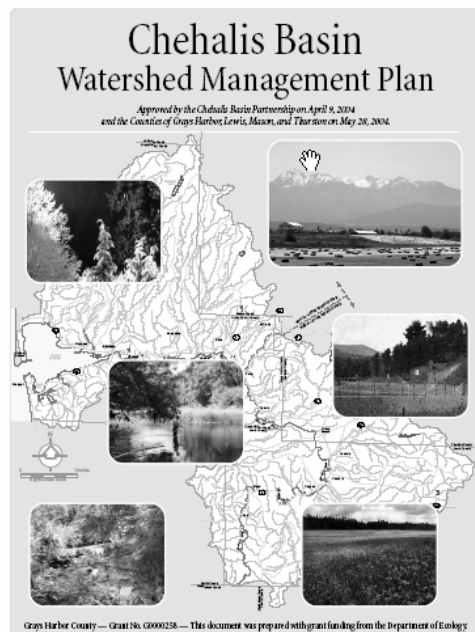
Chehalis Basin Partnership



Washington Watershed Planning Process

- Phase 1: Organization
- Phase 2: Assessment
- Phase 3: Watershed Plan Development
- Phase 4: Implementation

Chehalis Basin Partnership



Chehalis Basin Partnership



Using Plan2Fund: entering planning data from the
Chehalis Basin Watershed Management Plan

What to do first?



Demonstrate Chehalis Basin Partnership
Prioritization Process

Chehalis Watershed Partnership: Decision Rules for Prioritization of Objectives

	Decision Rules	Definitions	Range
1	Is it a primary objective?	Does something else need to happen before something else? Value added creates the potential for any other objective to be accomplished. Value added includes satisfying data gaps.	Value added independent (high) Independent (medium) or dependent (low) variable.
2	How many planning categories does the objective meet?	Accomplishes one or more of the four categories (wq, wq, h, isf) This assumes that all objectives that protect or enhance instream flows get four points because all planning components apply. Run this as a separate rule.	1-4 weighting
3	Is the objective time sensitive (deadline)?	Does this have to be done within a specific or critical time period? Each item can have its own critical time period based on experience.	Short term (3 years or less) – long term
4	How achievable is the objective?	Do we know the resources (people, data, public support, and money) are available to do it?	High-Medium-Low
5	Is it a long term or short term benefit to the Basin's health?	Limited resources	No long term or unknown benefit (0)
6	Required by local, state, or federal law or other agreements.		Yes (1) or No (0)

Chehalis Basin Prioritization Process

Decision Rules

Chehalis Watershed Partnership Decision Model: WMP Actions (Objectives)						
	Decision Rule 1		Decision Rule 2		Decision Rule 3	
Weight (%)	17%		17%		17%	
Basis of Ranking	High = 3		Range = 4 High		Short-term = 1	
	Medium = 2		to 1 Low		Long-term = 0	
	Low = 1					
WMP Action #	score		score		score	
36	2	0.170	3	0.170	1	1
7	3	0.255	4	0.227	1	1
31	2	0.170	1	0.057	1	1
53	2	0.170	1	0.057	1	1

Objectives (action items) Score

Chehalis Basin Prioritization Process

Equal Weight

Chehalis Watershed Partnership Decision Model: WMP Actions (Objectives)												
	Decision Rule 1		Decision Rule 2		Decision Rule 3		Decision Rule 4		Decision Rule 5		Decision Rule 6	
Weight (%)	17%		17%		17%		16%		17%		16%	
Basis of Ranking	High = 3 Medium = 2 Low = 1		Range = 4 High to 1 Low		Short-term = 1 Long-term = 0		High = 3 Medium = 2 Low = 1		Long-term = 1 Short-term = 0		Yes = 1 No = 0	
WMP Action #	score	score	score	score	score	score	score	score	score	score	score	Objective sort
36	2 0.170	3 0.170	1 0.170	3 0.240	1 0.170	1 0.160	1 0.170	1 0.160	1 0.170	1 0.160	1 0.080	1.080
7	3 0.255	4 0.227	1 0.170	2 0.160	1 0.170	1 0.170	1 0.170	1 0.170	1 0.170	0 0.000	0.982	0.982
31	2 0.170	1 0.057	1 0.170	3 0.240	1 0.170	1 0.160	1 0.170	1 0.170	1 0.170	1 0.160	0.967	0.967
53	2 0.170	1 0.057	1 0.170	3 0.240	1 0.170	1 0.160	1 0.170	1 0.170	1 0.170	1 0.160	0.967	0.967
1	3 0.255	1 0.057	1 0.170	3 0.240	1 0.170	1 0.160	1 0.170	1 0.170	1 0.170	0 0.000	0.892	0.892
21	3 0.255	1 0.057	1 0.170	3 0.240	1 0.170	1 0.160	1 0.170	1 0.170	1 0.170	0 0.000	0.892	0.892
54	3 0.255	1 0.057	1 0.170	3 0.240	1 0.170	1 0.160	1 0.170	1 0.170	1 0.170	1 0.160	0.887	0.887
38	2 0.170	1 0.057	1 0.170	2 0.160	1 0.170	1 0.160	1 0.170	1 0.170	1 0.170	0 0.000	0.812	0.812
47	3 0.255	1 0.057	1 0.170	2 0.160	1 0.170	1 0.160	1 0.170	1 0.170	1 0.170	0 0.000	0.807	0.807
25	2 0.170	1 0.057	1 0.170	3 0.240	1 0.170	1 0.160	1 0.170	1 0.170	1 0.170	0 0.000	0.807	0.807
48	2 0.170	1 0.057	1 0.170	3 0.240	1 0.170	1 0.160	1 0.170	1 0.170	1 0.170	0 0.000	0.727	0.727
50	2 0.170	1 0.057	1 0.170	2 0.160	1 0.170	1 0.160	1 0.170	1 0.170	1 0.170	0 0.000	0.722	0.722
23	1 0.085	1 0.057	1 0.170	3 0.240	1 0.170	1 0.160	1 0.170	1 0.170	1 0.170	0 0.000	0.703	0.703
41	2 0.170	2 0.113	1 0.170	1 0.080	1 0.170	1 0.160	1 0.170	1 0.170	1 0.170	1 0.160	0.688	0.688
10	1 0.085	2 0.113	0 0.000	2 0.160	1 0.170	1 0.160	1 0.170	1 0.170	1 0.170	0 0.000	0.675	0.675
9	1 0.085	3 0.170	1 0.170	1 0.080	1 0.170	1 0.080	1 0.170	1 0.170	1 0.170	0 0.000	0.647	0.647
20	2 0.170	1 0.057	1 0.170	1 0.080	1 0.170	1 0.160	1 0.170	1 0.170	1 0.170	0 0.000	0.642	0.642
3	3 0.255	1 0.057	1 0.170	2 0.160	1 0.170	1 0.160	1 0.170	1 0.170	1 0.170	0 0.000	0.642	0.642

Chehalis Basin Prioritization Process

Higher Weight For Decision Rule 1 & 2

Chehalis Watershed Partnership Decision Model: WMP Actions (Objectives)										
	Decision Rule 1	Decision Rule 2	Decision Rule 3	Decision Rule 4	Decision Rule 5	Decision Rule 6	Total Weight/Score			
Weight (%)	30%	30%	10%	15%	10%	5%	100%			
Basis of Ranking	High = 3 Medium = 2 Low = 1	Range = 4 High to 1 Low	Short-term = 1 Long-term = 0	High = 3 Medium = 2 Low = 1	Long-term = 1 Short-term = 0	Yes = 1 No = 0				
WMP Action #	score	score	score	score	score	score	score	Objective sort		
7	3 0.450	4 0.400	1 0.100	2 0.150	1 0.100	0 0.000	1 1.200			
36	2 0.300	3 0.300	1 0.100	3 0.225	1 0.100	1 0.050	1 1.075			
1	3 0.450	1 0.100	1 0.100	3 0.225	1 0.100	0 0.000	0 0.975			
21	3 0.450	1 0.100	1 0.100	3 0.225	1 0.100	0 0.000	0 0.975			
54	3 0.450	1 0.100	1 0.100	3 0.225	1 0.100	0 0.000	0 0.975			
47	3 0.450	1 0.100	1 0.100	2 0.150	1 0.100	0 0.000	0 0.900			
31	2 0.300	1 0.100	1 0.100	3 0.225	1 0.100	1 0.050	0 0.875			
53	2 0.300	1 0.100	1 0.100	3 0.225	1 0.100	1 0.050	0 0.875			
25	2 0.300	1 0.100	1 0.100	3 0.225	1 0.100	0 0.000	0 0.825			
48	2 0.300	1 0.100	1 0.100	3 0.225	1 0.100	0 0.000	0 0.825			
38	2 0.300	1 0.100	1 0.100	2 0.150	1 0.100	1 0.050	0 0.800			
3	3 0.450	1 0.100	1 0.100	2 0.150	0 0.000	0 0.000	0 0.800			
41	2 0.300	2 0.200	1 0.100	1 0.075	1 0.100	0 0.000	0 0.775			
50	2 0.300	1 0.100	1 0.100	2 0.150	1 0.100	0 0.000	0 0.750			
9	1 0.150	3 0.300	1 0.100	1 0.075	1 0.100	0 0.000	0 0.725			
20	2 0.300	1 0.100	1 0.100	1 0.075	1 0.100	0 0.000	0 0.675			
23	1 0.150	1 0.100	1 0.100	3 0.225	1 0.100	0 0.000	0 0.675			
10	1 0.150	2 0.200	0 0.000	2 0.150	1 0.100	1 0.050	0 0.650			

Decision Rule 1: Is it a primary objective?

Decision Rule 2: Number of planning categories the objective meets



Chehalis Basin Prioritization Process

Decision Rules 3 & 5 = Zero Weight

	Decision Rule 1	Decision Rule 2	Decision Rule 3	Decision Rule 4	Decision Rule 5	Decision Rule 6	Total Weight/Score
Weight (%)	35%	35%	0%	15%	0%	15%	100%
Basis of Ranking	High = 3 Medium = 2 Low = 1	Range = 4 High to 1 Low	Short-term = 1 Long-term = 0	High = 3 Medium = 2 Low = 1	Long-term = 1 Short-term = 0	Yes = 1 No = 0	
WMP Action #	score	score	score	score	score	score	Objective sort
7	3 0.525	4 0.467	1 0.000	2 0.150	1 0.000	0 0.000	1.142
36	2 0.350	3 0.350	1 0.000	3 0.225	1 0.000	1 0.150	1.075
1	3 0.525	1 0.117	1 0.000	3 0.225	1 0.000	0 0.000	0.867
21	3 0.525	1 0.117	1 0.000	3 0.225	1 0.000	0 0.000	0.867
54	3 0.525	1 0.117	1 0.000	3 0.225	1 0.000	0 0.000	0.867
31	2 0.350	1 0.117	1 0.000	3 0.225	1 0.000	1 0.150	0.842
53	2 0.350	1 0.117	1 0.000	3 0.225	1 0.000	1 0.150	0.842
3	3 0.525	1 0.117	1 0.000	2 0.150	0 0.000	0 0.000	0.792
47	3 0.525	1 0.117	1 0.000	2 0.150	1 0.000	0 0.000	0.792
38	2 0.350	1 0.117	1 0.000	2 0.150	1 0.000	1 0.150	0.767
10	1 0.175	2 0.233	0 0.000	2 0.150	1 0.000	1 0.150	0.708
25	2 0.350	1 0.117	1 0.000	3 0.225	1 0.000	0 0.000	0.692
48	2 0.350	1 0.117	1 0.000	3 0.225	1 0.000	0 0.000	0.692
41	2 0.350	2 0.233	1 0.000	1 0.075	1 0.000	0 0.000	0.658
50	2 0.350	1 0.117	1 0.000	2 0.150	1 0.000	0 0.000	0.617
9	1 0.175	3 0.350	1 0.000	1 0.075	1 0.000	0 0.000	0.600
20	2 0.350	1 0.117	1 0.000	1 0.075	1 0.000	0 0.000	0.542
23	1 0.175	1 0.117	1 0.000	3 0.225	1 0.000	0 0.000	0.517

Decision Rule 3: Is the objective time sensitive (deadline)?

Decision Rule 5: Is it a long term or short term benefit to the Basin's health?

Chehalis Basin Prioritization Process

Zero Weight for Rules 3 & 5
Highest Weight to Decision Rule 6

Chehalis Watershed Partnership Decision Model: WMP Actions (Objectives)														
	Decision Rule 1		Decision Rule 2		Decision Rule 3		Decision Rule 4		Decision Rule 5		Decision Rule 6		Total Weight/Score	
Weight (%)	20%		30%		0%		15%		0%		35%			100%
Basis of Ranking	High = 3 Medium = 2 Low = 1		Range = 4 High to 1 Low		Short-term = 1 Long-term = 0		High = 3 Medium = 2 Low = 1		Long-term = 1 Short-term = 0		Yes = 1 No = 0			
WMP Action #	score		score		score		score		score		score		Objective sort	
36	2	0.200	3	0.300	1	0.000	3	0.225	1	0.000	1	0.350	1.075	
31	2	0.200	1	0.100	1	0.000	3	0.225	1	0.000	1	0.350	0.875	
53	2	0.200	1	0.100	1	0.000	3	0.225	1	0.000	1	0.350	0.875	
7	3	0.300	4	0.400	1	0.000	2	0.150	1	0.000	0	0.000	0.850	
38	2	0.200	1	0.100	1	0.000	2	0.150	1	0.000	1	0.350	0.800	
10	1	0.100	2	0.200	0	0.000	2	0.150	1	0.000	1	0.350	0.800	
1	3	0.300	1	0.100	1	0.000	3	0.225	1	0.000	0	0.000	0.625	
21	3	0.300	1	0.100	1	0.000	3	0.225	1	0.000	0	0.000	0.625	
54	3	0.300	1	0.100	1	0.000	3	0.225	1	0.000	0	0.000	0.625	
47	3	0.300	1	0.100	1	0.000	2	0.150	1	0.000	0	0.000	0.550	
3	3	0.300	1	0.100	1	0.000	2	0.150	0	0.000	0	0.000	0.550	
25	2	0.200	1	0.100	1	0.000	3	0.225	1	0.000	0	0.000	0.525	
48	2	0.200	1	0.100	1	0.000	3	0.225	1	0.000	0	0.000	0.525	
9	1	0.100	3	0.300	1	0.000	1	0.075	1	0.000	0	0.000	0.475	
41	2	0.200	2	0.200	1	0.000	1	0.075	1	0.000	0	0.000	0.475	
50	2	0.200	1	0.100	1	0.000	2	0.150	1	0.000	0	0.000	0.450	
23	1	0.100	1	0.100	1	0.000	3	0.225	1	0.000	0	0.000	0.425	
20	2	0.200	1	0.100	1	0.000	1	0.075	1	0.000	0	0.000	0.375	

Decision Rule 6: Required by local, state, or federal law or other agreements.

Chehalis Basin Prioritization Process

100% Weight to Decision Rule 1

Chehalis Watershed Partnership Decision Model: WMP Actions (Objectives)											
	Decision Rule 1	Decision Rule 2	Decision Rule 3	Decision Rule 4	Decision Rule 5	Decision Rule 6	Total Weight/Score				
Weight (%)	100%	0%	0%	0%	0%	0%					
Basis of Ranking	High = 3 Medium = 2 Low = 1	Range = 4 High to 1 Low	Short-term = 1 Long-term = 0	High = 3 Medium = 2 Low = 1	Long-term = 1 Short-term = 0	Yes = 1 No = 0					
WMP Action #	score	score	score	score	score	score	score	Objective sort			
7	3 1.500	4 0.000	1 0.000	2 0.000	1 0.000	0 0.000	0 0.000	1.500			
1	3 1.500	1 0.000	1 0.000	3 0.000	1 0.000	0 0.000	0 0.000	1.500			
21	3 1.500	1 0.000	1 0.000	3 0.000	1 0.000	0 0.000	0 0.000	1.500			
54	3 1.500	1 0.000	1 0.000	3 0.000	1 0.000	0 0.000	0 0.000	1.500			
47	3 1.500	1 0.000	1 0.000	2 0.000	1 0.000	0 0.000	0 0.000	1.500			
3	3 1.500	1 0.000	1 0.000	2 0.000	0 0.000	0 0.000	0 0.000	1.500			
36	2 1.000	3 0.000	1 0.000	3 0.000	1 0.000	1 0.000	1 0.000	1.000			
31	2 1.000	1 0.000	1 0.000	3 0.000	1 0.000	1 0.000	1 0.000	1.000			
53	2 1.000	1 0.000	1 0.000	3 0.000	1 0.000	1 0.000	1 0.000	1.000			
38	2 1.000	1 0.000	1 0.000	2 0.000	1 0.000	1 0.000	1 0.000	1.000			
25	2 1.000	1 0.000	1 0.000	3 0.000	1 0.000	0 0.000	0 0.000	1.000			
48	2 1.000	1 0.000	1 0.000	3 0.000	1 0.000	0 0.000	0 0.000	1.000			
50	2 1.000	1 0.000	1 0.000	2 0.000	1 0.000	0 0.000	0 0.000	1.000			
41	2 1.000	2 0.000	1 0.000	1 0.000	1 0.000	0 0.000	0 0.000	1.000			
20	2 1.000	1 0.000	1 0.000	1 0.000	1 0.000	0 0.000	0 0.000	1.000			
23	1 0.500	1 0.000	1 0.000	3 0.000	1 0.000	0 0.000	0 0.000	0.500			
10	1 0.500	2 0.000	0 0.000	2 0.000	1 0.000	1 0.000	1 0.000	0.500			
9	1 0.500	3 0.000	1 0.000	1 0.000	1 0.000	0 0.000	0 0.000	0.500			

Decision Rule 1: Is it a primary objective?

Prioritization Results

Weight (%) Basis of Ranking Equal Weight	Weight (%) Basis of Ranking Weights 2 1> and 2>	Weight (%) Basis of Ranking Weights 3 3 and 5 = 0	Weight (%) Basis of Ranking Weight 4 3 and 5 = 0, 6>	Weight (%) Basis of Ranking Weight 5 increase 6	Weight (%) Basis of Ranking Weight 6 100% rule 1
WMP Action #	WMP Action #	WMP Action #	WMP Action #	WMP Action #	WMP Action #
36	7	7	7	36	7
7	36	36	36	31	1
31	1	1	1	53	21
53	21	21	21	7	54
1	54	54	54	38	47
21	47	31	31	10	3
54	31	53	53	1	36
38	53	3	47	21	31
47	25	47	25	54	53
25	48	38	48	47	38
48	38	10	38	3	25
50	3	25	9	25	48
23	41	48	41	48	50
41	50	41	3	9	41
10	9	50	50	41	20
9	20	9	23	50	23
20	23	20	20	23	10
3	10	23	10	20	9

How Prioritizing Objectives Helped to Clarify Tasks

WMP Actions (Objectives)		Proposed Tasks
WMP Action #	[Column B Priority = Highest to Lowest]	
36	Develop approaches to keep forestry and agriculture on the land. Clarifying point that this is more an issue about infiltration than runoff.	1. Inventory of properties (where are designated ag lands?) and mapping. 2. Determine which lands are at risk and/or provide opportunity for protection. 3. Gap analysis of existing incentives and programs. 4. Public Outreach 5. Deliver program activities. 6. Outcome measurement. (Requires database capabilities)
31	Protect healthy waters of the Chehalis Basin so they do not become impaired or need Total Maximum Daily Load (TMDL) reporting.	[Refer to 45, 44, 43, 41, 42, 37, 35, 34, 32, 31, 8] 1. Inventory of all waters. 2a. Establish monitoring and gather and interpret data. 2b. Determine which waters are at risk and/or provide opportunity for protection. 3. Gap analysis of existing programs and determine their effectiveness 4. Identify activities that would reduce risk of waters becoming unhealthy. 5. Improve stormwater functions. 6. Public Outreach 7. Deliver program activities 8. Outcome measurement. (Requires database capabilities)
53	Current regulatory flows should be retained; the Partnership wishes to preserve the 1976 priority date for those flow levels. Goals would fall under Water Quantity Goals.	Send Letter to Department of Ecology (Completed), GO TO> Action #54
7	Recommend adequate funding level for water resources management (source to be determined, funding to be distributed to those entities involved in water resources management). What activities does this encompass and what will be done? Who would be involved? This is similar to Action 1? Made both actions objectives because they are general and then identify tasks.	[Refer to Action 18, 22, 37] 1. Plan 2 Fund Development to identify required funding to accomplish WMP. 2. Decide whether to establish a separate legal organization capable of receiving public and/or private funds (such as a 501c3 organization, or Lower Columbia Basin Commission) for functions and activities. 3. Establish MOUs and MOAs for enhancing partnerships. 4. Develop strategies for maximum coordination with partners and for leveraging financial and political resources. 5. Expand the public information strategy (see P. IV-127).
38	Prevent the introduction of detrimental plant and animal species (aquatic and terrestrial) and control or eliminate species designated by the state or county as noxious, invasive, quarantined, or nuisance species.	[Refer to 31] 1. Gap analysis of existing incentives and programs [e.g., Multi-County Noxious Weeds Coalition] 2. Obtain and/or develop mapping of current infestations. 3. Determine which waters are at risk and/or provide opportunity for protection. 4. Support Public Outreach 5. Deliver program activities. 6. Outcome measurement.

Chehalis Basin Partnership

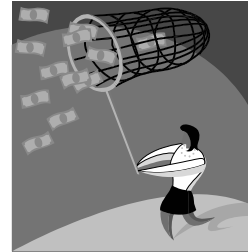
Where they are now....

Questions



**Now that we know what we
want to do...**

How do we pay for it?



Community Assets and Local Resources



Who are the different stakeholders who can contribute to a watershed financing plan?

Local Fundraising

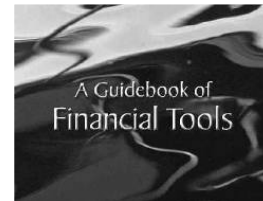


- Local fundraising campaigns have the dual benefit of raising revenues and raising awareness of the watershed initiatives.
- Since administrative costs seem to be the hardest to meet, local fundraising efforts can raise the funds needed for administrative purposes.



The Guidebook of Financial Tools

- Tools for Raising Revenue
- Tools For Acquiring Capital
- Tools For Enhancing Credit
- Tools for Building Public Private Partnerships



Directory of Watershed Resources

Federal Funding Programs
State Funding Programs
Private Funding Programs

*Directory
of Watershed
Resources*

Directory of Watershed Resources

Directory of Watershed Resources

A Searchable Database of Funding Sources

- ☐ Search Our Database
- ☐ Contact Us
- ☐ About Us
- ☐ About the Directory
- ☐ Watershed Tools and Links
- ☐ Add or Update Program Information



Search for Funding

Search our Database



[Home](#) | [Search our Database](#) | [Contact Us](#) | [About Us](#) | [About the Directory](#) | [Watershed Tools and Links](#) | [Add or Update Program Information](#)

Search our Database

The Directory of Watershed Resources is a searchable database of resources available to assist with a variety of environmental projects. The database includes information on federal, state, private, and other funding sources and assistance. Users can search for programs through a targeted search, keyword search or through an index of federal, state and private sources.

The Directory currently includes funding information for the following states: Alaska, Connecticut, Idaho, Maine, Massachusetts, New Hampshire, Oregon, Rhode Island, Vermont and Washington. To view funding information for states not included in this database, visit http://sspa.boisestate.edu/efc/Tools_Services/Directory/funding.htm or contact an EFC in your region.

Select the Type of Search:

- ☐ Targeted Search
- ☐ Keyword Search
- ☐ Index of Federal / Interstate Agency Sources
- ☐ Index of State Agency Sources
- ☐ Index of Private / Foundation Sources



Search for Funding

Search our Database



[Home](#) | [Search our Database](#) | [Contact Us](#) | [About Us](#) | [About the Directory](#) | [Watershed Tools and Links](#) | [Add or Update Program Info](#)

[Back to Search Options](#)

Results 1 through 10 of 1089

[Next >>](#)

[*319\(h\) Nonpoint Source Pollution \(NPS\) Abatement Grants, Rhode Island Department of Environmental Management - Office of Water Resources*](#)

[*319\(h\) Nonpoint Source Pollution Grants, New Hampshire Department of Environmental Services*](#)

[*319\(h\) Nonpoint Source Pollution Projects, Vermont Agency of Natural Resources*](#)

[*A. V. Stout Fund*](#)

[*Abandoned Mine Land Reclamation Program, U. S. Dept. of Interior*](#)

[*Abbott Laboratories Fund*](#)

[*Abelard Foundation West / Common Counsel Foundation*](#)

[*Access & Habitat Program, Oregon Department of Fish & Wildlife*](#)

[*Acid Mine Drainage Grant, U.S. Dept. of Interior*](#)

[*Acorn Foundation/Common Counsel Foundation*](#)

[Next >>](#)

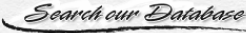
100



Program Information →

Website →

Contact Information →



Home | Search our Database | Contact Us | About Us | About Our Database | CD/PAW 5 Updates | EFD Web Site


Back To Search Results

<p>Program Name</p> <p>Program Information</p> <p><i>Species and area, etc.</i></p> <p>Program Description/Purpose</p> <p><i>Program Requirements/Restrictions</i></p> <p>Eligibility Information</p> <p><i>Eligible Species</i></p> <p>Award Information</p> <p><i>Award Amount</i></p> <p>Application Information</p> <p><i>Application Deadline</i></p> <p>Contact Information</p> <p><i>Primary Contact</i></p>	<p>Environmental Quality Incentives Program - Idaho</p> <p>Native Grasslands Conservation District</p> <p>The Environmental Quality Incentives Program (EQIP) was established to provide a single voluntary conservation program for farmers and ranchers to address significant natural resource needs and challenges. Additionally, EQIP provides technical, financial, and operational assistance to agricultural producers to address natural resource concerns and the other natural resource conservation objectives. EQIP is available to eligible producers who have an approved natural resource conservation plan.</p> <p>EQIP provides grants to assist in management, conservation, and other activities on working lands with various conservation objectives and goals to water and riparian habitat, wildlife, and other natural resources, and to assist in the development of conservation plans. EQIP also provides technical assistance to producers to help them develop and implement conservation plans. EQIP is available to eligible producers who have an approved natural resource conservation plan.</p> <p>EQIP provides grants to assist in management, conservation, and other activities on working lands with various conservation objectives and goals to water and riparian habitat, wildlife, and other natural resources, and to assist in the development of conservation plans. EQIP also provides technical assistance to producers to help them develop and implement conservation plans. EQIP is available to eligible producers who have an approved natural resource conservation plan.</p> <p>Example of Funded Projects</p> <p>Area Key Words</p> <p>Conservation Riparian Habitat Wildlife</p> <p>Activity Key Words</p> <p>Conservation Riparian Habitat Wildlife</p> <p>Last Updated: 12/06/00</p>
--	--

101

101

Catalog of Federal Funding for Watershed Protection



Watershed Academy
U.S. Environmental Protection Agency

Home Address | Contact Us | Feedback | Search | RSS

[Site Home](#) | [Home](#) | [About Us](#) | [Contact Us](#) | [Feedback](#) | [Privacy Policy](#) | [Terms of Use](#) | [Federal Funding for Watershed Protection](#)

Home

Water Funding Resources

[Home to this Site](#)

[Complete List of All Programs](#)

[Programs Listed by Region](#)

[Programs Listed by Agency](#)

[Registration & Program Request](#)

Catalog of Federal Funding Sources for Watershed Protection

The Catalog of Federal Funding Sources for Watershed Protection Web site is a searchable database of financial assistance sources (grants, loans, cost sharing) available to fund a variety of watershed protection projects. To select funding programs for particular requirements, use either of two searches below. One is based on subject matter criteria, and the other is based on words in the title of the funding program.

Criteria searches include the type of organization (e.g., non-profit groups, state, local government, state, business), type of assistance sought (grants or loans), and keywords (e.g., agriculture, wildlife habitat).

Searches result in a listing of programs by name. Click on each program name to review detailed information on the funding source.

1

2

3

4

Type of Assistance:

Eligible Organization:

Match Required:

Keywords:


☐ Air Quality/Deposition
☐ Agriculture
☐ Best Management Practices
☐ Coastal Waters
☐ Drinking water
☐ Economic Development
☐ Enforcement/Compliance
☐ Fisheries
☐ Floodplain/Regulation Zones
☐ Forests
☐ Ground Water
☐ Invasive Species
☐ Land Acquisition
☐ Monitoring
☐ Nonpoint Source Control

☐ Outreach/Education
☐ Partnerships
☐ Point Source Control
☐ Planning
☐ Pollution Prevention
☐ Research
☐ Solid Waste
☐ Stormwater Protection
☐ Stormwater Management
☐ Watersheds
☐ Water Conservation
☐ Watershed Management
☐ Wetlands
☐ Wildlife Habitat

[If no keyword is selected, search will include all keywords]

Search by Title [This search bypasses criteria search]

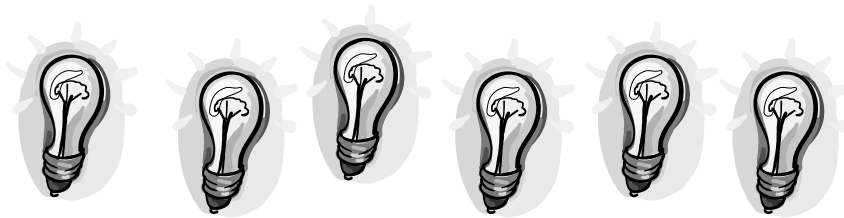
Type in words in the title of the funding program:



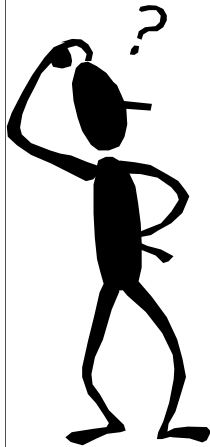
Environmental Planning Center
Bentley State University

102

Our belief is that even if one innovative financing idea may not be appropriate for a community, it may spark ideas, and discussion about priorities and needs and other ways of addressing issues.



Questions



- **Plan2Fund**

http://sspa.boisestate.edu/efc/Tools_Services/Plan2Fund/plan2fund.htm

- **Environmental Finance Center
Directory of Watershed Resources**

<http://efc.boisestate.edu/>

- **EPA's Catalog of Federal Funding
Sources for Watershed Protection**

www.epa.gov/watershedfunding



Plan2Fund: A Tool to Organize Your Watershed Funding



*Bill Jarocki
Environmental Finance Center
Boise State University*

*Amy Williams
Environmental Finance Center
Boise State University*

*Lee Napier
Grays Harbor County
Chehalis Basin Partnership*